



TOYOTA

2023 RAV4

2023 RAV4

Ready for your change of scenery.

Make every drive count in the 2023 Toyota RAV4. With its versatile design and powertrain choices, you'll be prepared for whatever the day brings. From camping by the lake to running errands around town, RAV4 is ready to maximize sport with utility. So jump in to explore your next favorite destination with a drive that feels as good as it looks.



Hybrid XSE shown in Cavalry Blue with Midnight Black Metallic roof and available Advanced Technology Package.



TRD Off-Road available in Ice Cap with available Advanced Technology Package. Off-roading is inherently dangerous. Abusive use may result in bodily harm or vehicle damage. Do not overload your vehicle. See Owner's Manual for weight limits and restrictions.





Hybrid XSE interior shown in Black/Blue with available panoramic glass roof and Premium Audio with Dynamic Navigation¹ and JBL^{®2}

HYBRID

**Go the
distance.**

RAV4 Hybrid's standard All-Wheel Drive (AWD) gives you confidence, with all-weather capability and enhanced on-road driving dynamics. Add 219 combined net horsepower and up to an EPA-estimated 40 mpg combined rating,³ and be ready for the trip ahead.

40

Up to an EPA-est. mpg³



Hybrid XSE shown in Cavalry Blue with Midnight Black Metallic roof, available Advanced Technology Package and panoramic glass roof.

See numbered footnotes in Disclosures section.



Prime XSE shown in Supersonic Red with Midnight Black Metallic roof (extra-cost color) with available Premium Package.

PRIME

Power up your drive.

RAV4 Prime is a force on the road, with 302 combined net horsepower, making it our most exciting RAV4 yet. And with standard AWD, inclement weather won't disrupt an adventurous day.

94

EPA-est. MPGe⁴



Plug-in hybrid efficiency

RAV4 Prime has an EPA-estimated rating of 42-mile EV-only range rating⁵ when fully charged. Add the ability to seamlessly switch between its hybrid mode and EV Mode, which has an EPA-estimated combined 94 MPGe rating⁴ and experience versatility in every drive.

PERFORMANCE

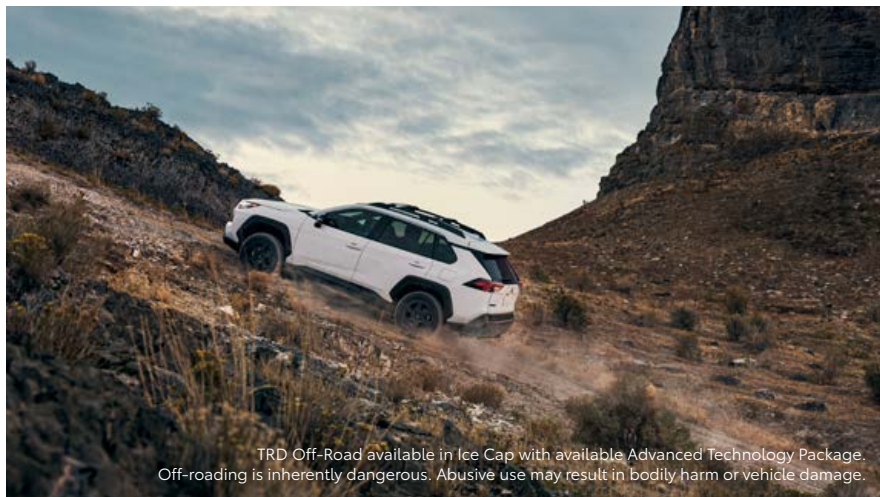
Powered by efficiency.



Hybrid XSE shown in Cavalry Blue with Midnight Black Metallic roof and available Advanced Technology Package with available Premium Package.

Hybrid powertrain with 219 net horsepower

RAV4 Hybrid's dual electric motors and an Electronically controlled Continuously Variable Transmission (ECVT) work together to provide impressive acceleration and help enhance fuel efficiency on every trip.



TRD Off-Road available in Ice Cap with available Advanced Technology Package. Off-roading is inherently dangerous. Abusive use may result in bodily harm or vehicle damage.

Dynamic Torque Vectoring All-Wheel Drive (TV-AWD)

Available on gas models, this AWD system helps enhance responsiveness and stability by sending up to 50 percent of the power to the rear and then further distributing that power to the right or left side — whichever needs it more.



RAV Prime XSE shown in Supersonic Red with Midnight Black Metallic roof (extra-cost color).

Plug-in performance

With a 5.7-second 0-60 time⁹, the power of RAV4 Prime will get you going fast. The advanced gas/electric powertrain delivers the power you need, while still delivering a smooth, comfortable ride.

See numbered footnotes in Disclosures section.

AUDIO MULTIMEDIA

Amplify your drive.

Enhance every drive with an experience that's all about you. Whether enjoying your favorite soundtrack or interacting with an interface that you're familiar with, you'll always be surrounded by comfort.



JBL® Premium Audio System

Immerse yourself in quality sound with RAV4's available JBL^{®2} Premium Audio. An 11-speaker, 800-watt audio system equipped with a subwoofer, it provides phenomenal sound that amplifies every drive.



Wireless Apple CarPlay®

Bring along a familiar face. With RAV4's wireless Apple CarPlay^{®7} compatibility, you can use your compatible iPhone^{®8} with the multimedia system to get directions, make calls, send and receive messages and listen to music, all while staying focused behind the wheel.



Wireless Android Auto™

Stay connected on the road. When wirelessly pairing your compatible Android^{™9} phone with the audio multimedia system, Android Auto^{™10} lets you get real-time traffic alerts, make and receive phone calls, listen to your favorite soundtrack and more.



SiriusXM® Platinum Plan 3-month trial

With the SiriusXM[®] Platinum Plan 3-month trial¹¹, you get 425+ channels, including 165+ channels in your vehicle, to listen to ad-free music, plus sports, news, comedy and more. Innovative features in RAV4 make it even easier to search, discover and listen than ever before, through personalized channel recommendations curated just "For You." Plus, the Live Sports category puts all your games and teams in one place for easy access.

Technology that keeps up with you.

Take advantage of smarter and convenient available technologies designed to simplify your everyday life. From a suite of services that are there for you 24/7 to an immersive audio multimedia system, you can stay connected to your world.*,¹²



Safety Connect®

Round-the-clock help when the unexpected happens!³

- ✓ Emergency Assistance Button (SOS)
- ✓ Enhanced Roadside Assistance¹⁴
- ✓ Automatic Collision Notification
- ✓ Stolen Vehicle Locator¹⁵
- ✓ Collision Assistance



Service Connect

Being proactive to help keep your vehicle in peak condition!¹⁶

- ✓ Vehicle Health Report
- ✓ Vehicle Maintenance Alert
- ✓ Maintenance Reminder



Wi-Fi Connect

Turn your Toyota into a hotspot with 4G connectivity!¹⁷

- ✓ AT&T Hotspot
- ✓ Integrated Streaming for Apple Music®¹⁸ and Amazon Music™¹⁹



Drive Connect

Enhanced features to get you where you need to be.²⁰

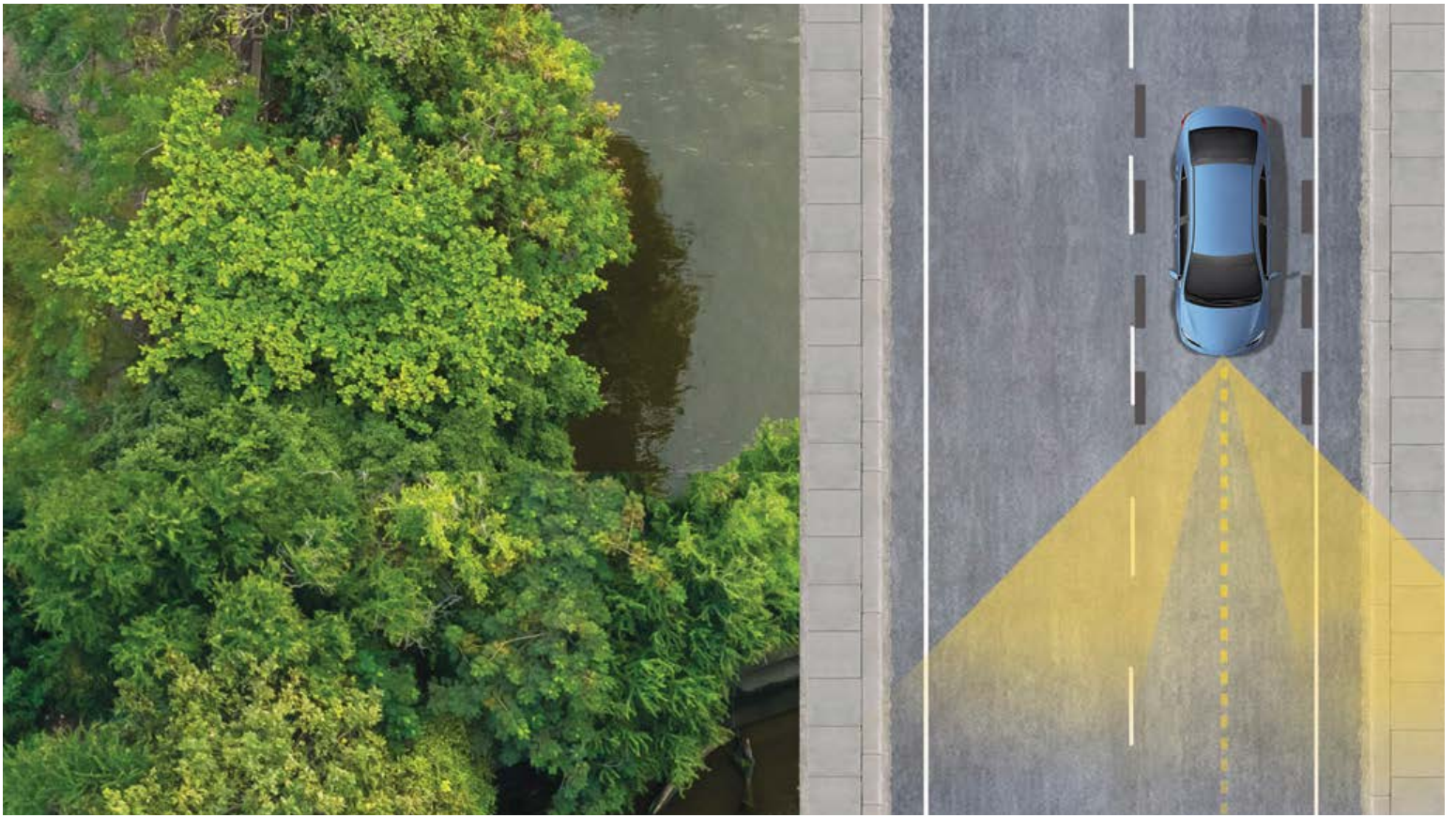
- ✓ Destination Assist²¹
- ✓ Intelligent Assistant²⁰
- ✓ Cloud Navigation²⁰



Remote Connect

Manage your vehicle, including remote start and much more.²²

- ✓ Digital Key²³ (if compatible)
- ✓ Remote Vehicle Start
- ✓ Unlock/Lock
- ✓ Remote Notifications
- ✓ Remote Climate
- ✓ Remote Charging
- ✓ Guest Driver
- ✓ Smartwatch Compatibility²⁴
- ✓ Amazon Alexa²⁵ and Google Assistant™²⁶ Capability



TOYOTA SAFETY SENSE™ (TSS 2.5)

Peace of mind comes standard.

Toyota Safety Sense™ 2.5 (TSS 2.5)*, 27 is a bundle of active safety features included on many new Toyota vehicles at no additional cost. These innovative features were designed to help protect you and your passengers from harm.



Pre-Collision System with Pedestrian Detection²⁸



Full-Speed Range Dynamic Radar Cruise Control²⁹



Lane Departure Alert with Steering Assist³⁰



Automatic High Beams³¹



Lane Tracing Assist³²



Road Sign Assist³³

*Feature availability may vary by model grade. RAV4 Prime models include Toyota Safety Sense™ 2.5+ (TSS 2.5+). For more information, visit toyota.com/safety-sense. See numbered footnotes in Disclosures section.

RAV4 MODELS



LE

Includes these key features

Mechanical/Performance

- ✓ 2.5L 4-Cylinder engine with 203 hp
- ✓ Direct Shift 8-speed Automatic Transmission
- ✓ Normal, Eco and Sport drive modes
- ✓ Front-Wheel Drive (FWD)
- ✓ Available All-Wheel Drive (AWD) with Multi-Terrain Select (MTS)
- ✓ Up to 27 city/34 highway/30 combined EPA-est. mpg³

Exterior Features

- ✓ Multi-LED headlights with black bezels
- ✓ LED Daytime Running Lights (DRL)
- ✓ LED taillights and stoplights
- ✓ Black hexagon-patterned bar front grille
- ✓ Power outside mirrors with folding feature
- ✓ Dual chrome exhaust tips
- ✓ 17-in. steel wheels with silver 6-spoke wheel covers

Interior Features

- ✓ Seating for five
- ✓ Climate control system with rear seat vents
- ✓ Fabric-trimmed seats
 - 6-way adjustable front driver's seat
 - 4-way adjustable front passenger seat
 - 60/40 split reclining fold-flat rear seat
- ✓ 7-in digital Multi-Information Display (MID)
- ✓ Three USB media ports³⁴

Audio Multimedia

- ✓ 8-in. Toyota Audio Multimedia:
 - 8-in. touchscreen
 - Wireless Apple CarPlay^{®7}
 - Wireless Android Auto^{™10}
 - SiriusXM[®] with 3-month Platinum Plan trial subscription¹¹

Connected Services Trials¹²

4G network dependent

- ✓ Wi-Fi Connect¹⁷
- ✓ Service Connect¹⁶
- ✓ Remote Connect²²
- ✓ Safety Connect^{®13}
- ✓ Drive Connect²⁰

Safety Features

- ✓ Toyota Safety Sense[™] 2.5 (TSS 2.5)²⁷
- ✓ Star Safety System[™]
- ✓ Eight airbags³⁶

Options and Packages

- ✓ Blind Spot Monitor (BSM)³⁷ with Rear Cross-Traffic Alert (RCTA)³⁸
- ✓ Rear cargo area cover



XLE

Adds to or replaces features offered on LE

Mechanical/Performance

- ✓ Available All-Wheel Drive (AWD) with Multi-Terrain Select (MTS)
- ✓ Up to 28 city/35 highway/30 combined EPA-est. mpg³

Exterior Features

- ✓ LED projector headlights with chrome-finished bezels and auto on/off feature
- ✓ LED Daytime Running Lights (DRL) accent lighting
- ✓ Color-keyed heated power outside mirrors with turn signal and blind spot warning³⁷ indicators, and folding feature
- ✓ 17-in. 5-spoke light gray metallic alloy wheels

Interior Features

- ✓ Dual zone automatic climate control with rear-seat vents
- ✓ Fabric-trimmed seats with embossed polygon-design seat inserts
 - 8-way adjustable driver's seat with lumbar support
- ✓ Smart Key System on front doors and liftgate³⁹ with Push Button Start
- ✓ One USB media port³⁴ and four USB charge ports³⁴
- ✓ Rear cargo area cover

Audio Multimedia

- ✓ 8-in. Toyota Audio Multimedia:
 - 8-in. touchscreen
 - Wireless Apple CarPlay^{®7}
 - Wireless Android Auto^{™10}
 - SiriusXM[®] with 3-month Platinum Plan trial subscription¹¹

Connected Services Trials¹²

4G network dependent

- ✓ Wi-Fi Connect¹⁷
- ✓ Service Connect¹⁶
- ✓ Remote Connect²²
- ✓ Safety Connect^{®13}
- ✓ Drive Connect²⁰

Safety Features

- ✓ Toyota Safety Sense[™] 2.5 (TSS 2.5)²⁷
- ✓ Star Safety System[™]
- ✓ Eight airbags³⁶
- ✓ Blind Spot Monitor (BSM)³⁷ with Rear Cross-Traffic Alert (RCTA)³⁸

Options and Packages

- ✓ XLE Weather Package includes:
 - Heated leather-trimmed steering wheel
 - Heated front seats
 - Rain-sensing variable intermittent windshield wipers with de-icer function
- ✓ XLE Convenience Package includes:
 - Height-adjustable power liftgate³⁹ with jam protection
 - Power tilt/slide moonroof with one-touch open/close



XLE Premium

Adds to or replaces features offered on XLE

Mechanical/Performance

- ✓ Available All-Wheel Drive (AWD) with Multi-Terrain Select (MTS)
- ✓ Up to 28 city/35 highway/30 combined EPA-est. mpg³

Exterior Features

- ✓ Integrated LED fog lights
- ✓ Power tilt/slide moonroof with one-touch open/close
- ✓ Power liftgate³⁹ with jam protection
- ✓ 19-in. multi-spoke Super Chrome-finished alloy wheels

Interior Features

- ✓ SofTex[®]-trimmed⁴⁰ seats
 - 8-way power-adjustable driver's seat with lumbar support
- ✓ Leather-trimmed steering wheel
- ✓ Dual zone automatic climate control system, front center-vent flow controls and rear-seat vents

Audio Multimedia

- ✓ 8-in. Toyota Audio Multimedia:
 - 8-in. touchscreen
 - Wireless Apple CarPlay^{®7}
 - Wireless Android Auto^{™10}
 - SiriusXM[®] with 3-month Platinum Plan trial subscription¹¹

Connected Services Trials¹²

4G network dependent

- ✓ Wi-Fi Connect¹⁷
- ✓ Service Connect¹⁶
- ✓ Remote Connect²²
- ✓ Safety Connect^{®13}
- ✓ Drive Connect²⁰

Safety Features

- ✓ Toyota Safety Sense[™] 2.5 (TSS 2.5)²⁷
- ✓ Star Safety System[™]
- ✓ Eight airbags³⁶
- ✓ Blind Spot Monitor (BSM)³⁷ with Rear Cross-Traffic Alert (RCTA)³⁸

Options and Packages

- ✓ XLE Premium Grade Weather Package includes:
 - Heated leather-trimmed steering wheel
 - Heated front seats
 - 8-way power-adjustable driver's seat with two-position memory function and lumbar support
 - Rain-sensing variable intermittent windshield wipers with de-icer function
- ✓ XLE Premium Grade Advanced Technology Package
 - Front and Rear Parking Assist with Automatic Braking (PA w/AB)⁴¹
 - Digital display rearview mirror with HomeLink^{®42} universal transceiver
 - Qi-compatible wireless smartphone charging⁴³
- ✓ 10.5-inch Toyota Audio Multimedia:
 - 10.5-in touchscreen
 - Wireless Apple CarPlay^{®7}
 - Wireless Android Auto^{™10}
 - SiriusXM[®] with 3-month Platinum trial subscription¹¹
- ✓ 11-speaker JBL^{®2} Premium Audio including subwoofer and amplifier

RAV4 MODELS



Adventure

Adds to or replaces features offered on XLE

Mechanical/Performance

- ✓ Dynamic Torque Vectoring All-Wheel Drive (TV-AWD) with Rear Driveline Disconnect
- ✓ Multi-Terrain Select (MTS) (MUD & SAND, ROCK & DIRT, and SNOW modes)
- ✓ 3500-lb. towing capacity⁴⁴
- ✓ 25 city/33 highway/28 combined EPA-est. mpg³

Exterior Features

- ✓ Unique split-bar front upper grille
- ✓ Active grille shutters
- ✓ Larger black overfenders
- ✓ Unique raised roof rails
- ✓ Black RAV4 and Adventure badging with matte-black accents
- ✓ 19-in. split 5-spoke alloy wheels with matte black accents

Interior Features

- ✓ SofTex®-trimmed⁴⁰ seats with orange accents and stitching
- ✓ Orange-accented interior, including stitching on dash, doors and seats
- ✓ One 120V/100W deck-mounted power outlet⁴⁵

Audio Multimedia

- ✓ 8-in. Toyota Audio Multimedia:
 - 8-in. touchscreen
 - Wireless Apple CarPlay⁸⁷
 - Wireless Android Auto^{TM10}
 - SiriusXM® with 3-month Platinum Plan trial subscription¹¹

Connected Services Trials¹²

4G network dependent

- ✓ Wi-Fi Connect¹⁷
- ✓ Service Connect¹⁶
- ✓ Remote Connect²²
- ✓ Safety Connect⁸¹³
- ✓ Drive Connect²⁰

Safety Features

- ✓ Toyota Safety Sense™ 2.5 (TSS 2.5)²⁷
- ✓ Star Safety System™
- ✓ Eight airbags³⁶
- ✓ Blind Spot Monitor (BSM)³⁷ with Rear Cross-Traffic Alert (RCTA)³⁸

Options and Packages

- ✓ Adventure Weather Package includes:
 - Heated steering wheel
 - Heated front seats
 - Rain-sensing variable intermittent windshield wipers with de-icer function
- ✓ Adventure Grade Convenience Package includes:
 - Height-adjustable power liftgate³⁹ with jam protection
 - Power tilt/slide moonroof with one-touch open/close
- ✓ 10.5-in. Toyota Audio Multimedia:
 - 10.5-in. touchscreen
 - Wireless Apple CarPlay⁸⁷
 - Wireless Android Auto^{TM10}
 - SiriusXM® with 3-month Platinum Plan trial subscription¹¹
- ✓ 11-speaker JBL®⁸² Premium Audio including subwoofer and amplifier
- ✓ Two-tone exterior color⁴⁶



TRD Off-Road

Adds to or replaces features offered on Adventure

Mechanical/Performance

- ✓ Dynamic Torque Vectoring All-Wheel Drive (TV-AWD) with Rear Driveline Disconnect
- ✓ Multi-Terrain Select (MTS) (MUD & SAND, ROCK & DIRT, and SNOW modes)
- ✓ TRD-tuned suspension
- ✓ 3500-lb. towing capacity⁴⁴
- ✓ 25 city/32 highway/27 combined EPA-est. mpg³

Exterior Features

- ✓ Black rear bumper with metallic gray insert
- ✓ Power tilt/slid moonroof with one-touch open/close
- ✓ Power liftgate³⁹ with jam protection
- ✓ Black RAV4 and TRD Off-Road badging
- ✓ Red-painted coil springs
- ✓ TRD-stamped stainless steel front skid plate
- ✓ 18-in. 6-spoke matte-black TRD flow-formed alloy wheels
- ✓ Falken®⁸⁴⁷ WILDPEAK All-Terrain tires

Interior Features

- ✓ SofTex®-trimmed⁴⁰ seats with red accents and stitching and TRD stitching in front headrests
- ✓ Red-accented interior, including red stitching on dash, doors and seat
- ✓ TRD all-weather floor mats⁴⁸ and cargo liner

Audio Multimedia

- ✓ 10.5-in. Toyota Audio Multimedia:
 - 10.5-in. touchscreen
 - Wireless Apple CarPlay⁸⁷
 - Wireless Android Auto^{TM10}
 - SiriusXM® with 3-month Platinum Plan trial subscription¹¹

Connected Services Trials¹²

4G network dependent

- ✓ Wi-Fi Connect¹⁷
- ✓ Service Connect¹⁶
- ✓ Remote Connect²²
- ✓ Safety Connect⁸¹³
- ✓ Drive Connect²⁰

Safety Features

- ✓ Toyota Safety Sense™ 2.5 (TSS 2.5)²⁷
- ✓ Star Safety System™
- ✓ Eight airbags³⁶
- ✓ Blind Spot Monitor (BSM)³⁷ with Rear Cross-Traffic Alert (RCTA)³⁸

Options and Packages

- ✓ TRD Off-Road Weather Package includes:
 - Heated steering wheel
 - Perforated heated and ventilated front seats
 - Rain-sensing variable intermittent windshield wipers with de-icer function
- ✓ TRD Off-Road Advanced Technology Package includes:
 - Front and Rear Parking Assist with Automatic Braking (PA w/AB)⁴¹
 - Digital display rearview mirror with HomeLink®⁸⁴² universal transceiver
 - Qi-compatible wireless smartphone charging⁴³
- ✓ 11-speaker JBL®⁸² Premium Audio including subwoofer and amplifier
- ✓ Two-tone exterior color⁴⁶



Limited

Adds to or replaces features offered on XLE Premium

Mechanical/Performance

- ✓ Available Dynamic Torque Vectoring All-Wheel Drive (TV-AWD) with Rear Driveline Disconnect
- ✓ Available Multi-Terrain Select (MTS) (MUD & SAND, ROCK & DIRT, and SNOW modes)
- ✓ Up to 27 city/35 highway/30 combined EPA-est. mpg³

Exterior Features

- ✓ Bi-LED projector low- and high-beam headlights with LED accent lights
- ✓ Dark gray metallic-colored hexagon patterned front grille
- ✓ Chrome-accented color keyed outside door handles with front-row touch sensors
- ✓ Puddle lights

Interior Features

- ✓ SofTex®-trimmed⁴⁰ seats
 - Heated front seats
- ✓ Dark-brown-accented interior, including dark-brown stitching on dash, doors and seats
- ✓ Blue ambient interior lighting
- ✓ 12.3-in. digital Multi-Information Display (MID)

Audio Multimedia

- ✓ 10.5-in. Toyota Audio Multimedia:
 - 10.5-in. touchscreen
 - Wireless Apple CarPlay⁸⁷
 - Wireless Android Auto^{TM10}
 - SiriusXM® with 3-month Platinum Plan trial subscription¹¹
- ✓ 11-speaker JBL®⁸² Premium Audio including subwoofer and amplifier

Connected Services Trials¹²

4G network dependent

- ✓ Wi-Fi Connect¹⁷
- ✓ Service Connect¹⁶
- ✓ Remote Connect²²
- ✓ Safety Connect⁸¹³
- ✓ Drive Connect²⁰

Safety Features

- ✓ Toyota Safety Sense™ 2.5 (TSS 2.5)²⁷
- ✓ Star Safety System™
- ✓ Eight airbags³⁶
- ✓ Blind Spot Monitor (BSM)³⁷ with Rear Cross-Traffic Alert (RCTA)³⁸
- ✓ Front and Rear Parking Assist with Automated Braking (PA w/AB)⁴¹

Options and Packages

- ✓ Limited Grade Weather Package includes:
 - Heated steering wheel
 - Perforated heated and ventilated front seats
 - Rear outboard passenger heated seating with perforated inserts
 - Rain-sensing variable intermittent windshield wipers with de-icer function
 - Panoramic View Monitor⁴⁹ with 360-degree Overhead View in low-speed drive and reverse, and Curb View
- ✓ Limited Grade Advanced Technology Package includes:
 - Smart Key System on all doors and liftgate³⁹
 - Height-adjustable foot-activated power liftgate³⁹ with jam protection
 - Digital rearview mirror with HomeLink®⁸⁴² universal transceiver
 - Qi-compatible wireless smartphone charging⁴³
- ✓ Panoramic glass roof with front power/tilt moonroof

RAV4 MODELS



Hybrid LE

Adds to or replaces features offered on LE

Mechanical/Performance

- ✓ Hybrid engine: 2.5L 4-Cylinder with 219 combined net hp
- ✓ Electronically controlled Continuously Variable Transmission with sequential shift mode
- ✓ Electronic On-Demand All-Wheel Drive (AWD)
- ✓ Drive mode dial with Normal, Eco and Sport Drive modes
- ✓ TRAIL and EV Mode⁵⁰ select buttons
- ✓ 41 city/38 highway/40 combined EPA-est. mpg³

Exterior Features

- ✓ Active grille shutters
- ✓ 17-in. 5-spoke light gray metallic alloy wheels

Interior Features

- ✓ Dual zone automatic climate control system with rear-seat vents
- ✓ 7-in digital Multi-Information Display (MID) with hybrid power meter

Audio Multimedia

- ✓ 8-in. Toyota Audio Multimedia:
 - 8-in. touchscreen
 - Wireless Apple CarPlay^{®7}
 - Wireless Android Auto^{™10}
 - SiriusXM[®] with 3-month Platinum Plan trial subscription¹¹

Connected Services Trials¹²

4G network dependent

- ✓ Wi-Fi Connect¹⁷
- ✓ Service Connect¹⁶
- ✓ Remote Connect²²
- ✓ Safety Connect^{®13}
- ✓ Drive Connect²⁰

Safety Features

- ✓ Toyota Safety Sense[™] 2.5 (TSS 2.5)²⁷
- ✓ Star Safety System[™]
- ✓ Eight airbags³⁶

Options and Packages

- ✓ Blind Spot Monitor (BSM)³⁷ with Rear Cross-Traffic Alert (RCTA)³⁸
- ✓ Rear cargo area cover



Hybrid XLE

Adds to or replaces features offered on Hybrid LE

Mechanical/Performance

- ✓ 41 city/38 highway/40 combined EPA-est. mpg³

Exterior Features

- ✓ LED projector headlights with chrome-finished bezels and auto on/off feature
- ✓ LED Daytime Running Lights (DRL) accent lighting
- ✓ Color-keyed outside door handles with front-row touch sensors
- ✓ Color-keyed heated power outside mirrors with turn signal and blind spot warning³⁷ indicators, and folding feature

Interior Features

- ✓ Dual zone automatic climate control with rear-seat vents
- ✓ Fabric-trimmed seats with embossed polygon-design seat inserts
 - 8-way adjustable driver's seat with lumbar support
- ✓ Smart Key System on front doors and liftgate³⁹ with Push Button Start
- ✓ One USB media port³⁴ and four USB charge ports³⁴
- ✓ Rear cargo area cover

Audio Multimedia

- ✓ 8-in. Toyota Audio Multimedia:
 - 8-in. touchscreen
 - Wireless Apple CarPlay^{®7}
 - Wireless Android Auto^{™10}
 - SiriusXM[®] with 3-month Platinum Plan trial subscription¹¹

Connected Services Trials¹²

4G network dependent

- ✓ Wi-Fi Connect¹⁷
- ✓ Service Connect¹⁶
- ✓ Remote Connect²²
- ✓ Safety Connect^{®13}
- ✓ Drive Connect²⁰

Safety Features

- ✓ Toyota Safety Sense[™] 2.5 (TSS 2.5)²⁷
- ✓ Star Safety System[™]
- ✓ Eight airbags³⁶
- ✓ Blind Spot Monitor (BSM)³⁷ with Rear Cross-Traffic Alert (RCTA)³⁸

Options and Packages

- ✓ XLE Weather Package includes:
 - Heated leather-trimmed steering wheel
 - Heated front seats
 - Rain-sensing variable intermittent windshield wipers with de-icer function
- ✓ XLE Convenience Package includes:
 - Height-adjustable power liftgate³⁹ with jam protection
 - Power tilt/slide moonroof with one-touch open/close



Hybrid Woodland Edition

Adds to or replaces features offered on Hybrid LE

Mechanical/Performance

- ✓ 38 city/35 highway/37 combined EPA-est. mpg³

Exterior Features

- ✓ Integrated LED foglights
- ✓ 18-in. 6-spoke bronze-colored TRD flow-formed alloy wheels
- ✓ Color-keyed outside door handles with front-row touch sensors
- ✓ Falken^{®47} WILDPEAK All-Terrain tires
- ✓ Color-keyed heated power outside mirrors with turn signal and blind spot warning³⁷ indicators, and folding feature
- ✓ Black RAV4 badging and Woodland Edition decal
- ✓ Dual black chrome-tipped exhaust

Interior Features

- ✓ Dual zone automatic climate control with rear-seat vents
- ✓ Fabric-trimmed seats with embossed polygon-design seat inserts
 - 8-way adjustable driver's seat with lumbar support
- ✓ Smart Key System on front doors and liftgate³⁹ with Push Button Start
- ✓ One USB media port³⁴ and four USB charge ports³⁴
- ✓ Woodland all-weather floor mats and cargo liner⁴⁸
- ✓ Rear cargo area cover
- ✓ One 120V/100W AC power outlet in cargo area⁴⁵

Audio Multimedia

- ✓ 8-in. Toyota Audio Multimedia:
 - 8-in. touchscreen
 - Wireless Apple CarPlay^{®7}
 - Wireless Android Auto^{™10}
 - SiriusXM[®] with 3-month Platinum Plan trial subscription¹¹

Connected Services Trials¹²

4G network dependent

- ✓ Wi-Fi Connect¹⁷
- ✓ Service Connect¹⁶
- ✓ Remote Connect²²
- ✓ Safety Connect^{®13}
- ✓ Drive Connect²⁰

Safety Features

- ✓ Toyota Safety Sense[™] 2.5 (TSS 2.5)²⁷
- ✓ Star Safety System[™]
- ✓ Eight airbags³⁶
- ✓ Blind Spot Monitor (BSM)³⁷ with Rear Cross-Traffic Alert (RCTA)³⁸

RAV4 MODELS



Hybrid XLE Premium

Adds to or replaces features offered on Hybrid XLE

Mechanical/Performance

- ✓ 41 city/38 highway/40 combined EPA-est. mpg³

Exterior Features

- ✓ Integrated LED fog lights
- ✓ Power tilt/slide moonroof with one-touch open/close
- ✓ Power liftgate with jam protection
- ✓ 18-in. multi-spoke dark metallic-finished alloy wheels

Interior Features

- ✓ Integrated LED fog lights
- ✓ Dual zone automatic climate control system, front center-vent flow controls, and rear-seat vents
- ✓ SofTex®-trimmed⁴⁰ seats
 - 8-way power-adjustable driver's seat with lumbar support
- ✓ Leather-trimmed steering wheel

Audio Multimedia

- ✓ 8-in. Toyota Audio Multimedia:
 - 8-in. touchscreen
 - Wireless Apple CarPlay^{®7}
 - Wireless Android Auto^{™10}
 - SiriusXM[®] with 3-month Platinum Plan trial subscription¹¹

Connected Services Trials¹²

4G network dependent

- ✓ Wi-Fi Connect¹⁷
- ✓ Service Connect¹⁶
- ✓ Remote Connect²²
- ✓ Safety Connect^{®13}
- ✓ Drive Connect²⁰

Safety Features

- ✓ Toyota Safety Sense™ 2.5 (TSS 2.5)²⁷
- ✓ Star Safety System™
- ✓ Eight airbags³⁶
- ✓ Blind Spot Monitor (BSM)³⁷ with Rear Cross-Traffic Alert (RCTA)³⁸

Options and Packages

- ✓ XLE Premium Grade Weather Package includes:
 - Heated leather-trimmed steering wheel
 - Heated front seats
 - 8-way power-adjustable driver's seat with two-position memory function and lumbar support
 - Rain-sensing variable intermittent windshield wipers with de-icer function
- ✓ XLE Premium Hybrid Grade Advanced Technology Package
 - Front and Rear Parking Assist with Automatic Braking (PA w/AB)⁴¹
 - Digital display rearview mirror with HomeLink^{®42} universal transceiver
 - Qi-compatible wireless smartphone charging⁴³
- ✓ 10.5-in. Toyota Audio Multimedia:
 - 10.5-in. touchscreen
 - Wireless Apple CarPlay^{®7}
 - Wireless Android Auto^{™10}
 - SiriusXM[®] with 3-month Platinum Plan trial subscription¹¹
- ✓ 11-speaker JBL^{®2} Premium Audio including subwoofer and amplifier



Hybrid SE

Adds to or replaces features offered on Hybrid XLE

Mechanical/Performance

- ✓ Sport-tuned suspension
- ✓ 41 city/38 highway/40 combined EPA-est. mpg³

Exterior Features

- ✓ Black hexagon-patterned front grille
- ✓ Black-painted lower front bumper, overfenders, outside mirrors, rocker panels, and rear bumper with metallic gray insert
- ✓ Power tilt/slide moonroof with one-touch open/close
- ✓ 18-in. multi-spoke black-painted alloy wheels

Interior Features

- ✓ Fabric-trimmed seats with sporty blue stitching
- ✓ Blue-accented interior including blue stitching on dash and seats
- ✓ Black headliner

Audio Multimedia

- ✓ 8-in. Toyota Audio Multimedia:
 - 8-in. touchscreen
 - Wireless Apple CarPlay^{®7}
 - Wireless Android Auto^{™10}
 - SiriusXM[®] with 3-month Platinum Plan trial subscription¹¹

Connected Services Trials¹²

4G network dependent

- ✓ Wi-Fi Connect¹⁷
- ✓ Service Connect¹⁶
- ✓ Remote Connect²²
- ✓ Safety Connect^{®13}
- ✓ Drive Connect²⁰

Safety Features

- ✓ Toyota Safety Sense™ 2.5 (TSS 2.5)²⁷
- ✓ Star Safety System™
- ✓ Eight airbags³⁶
- ✓ Blind Spot Monitor (BSM)³⁷ with Rear Cross-Traffic Alert (RCTA)³⁸

Options and Packages

- ✓ SE Grade Convenience Package includes:
 - Height-adjustable power liftgate³⁹ with jam protection
 - Power tilt/slide moonroof with one-touch open/close
- ✓ SE Grade Weather Package includes:
 - Heated steering wheel
 - Heated front seats
 - Rain-sensing variable intermittent windshield wipers with de-icer function



Hybrid XSE

Adds to or replaces features offered on Hybrid SE

Mechanical/Performance

- ✓ Sport-tuned suspension
- ✓ 41 city/38 highway/40 combined EPA-est. mpg³

Exterior Features

- ✓ Bi-LED projector low- and high-beam headlights with LED accent lights
- ✓ Vertical LED accent lighting
- ✓ Two-tone exterior color with Midnight Black Metallic roof⁴⁶
- ✓ Power tilt/slide moonroof with one-touch open/close

Interior Features

- ✓ SofTex®-trimmed⁴⁰ seats with sporty blue stitching and fabric seat inserts
 - Heated front seats
- ✓ Blue ambient interior lighting

Audio Multimedia

- ✓ 10.5-in. Toyota Audio Multimedia:
 - 10.5-in. touchscreen
 - Wireless Apple CarPlay^{®7}
 - Wireless Android Auto^{™10}
 - SiriusXM[®] with 3-month Platinum Plan trial subscription¹¹

Connected Services Trials¹²

4G network dependent

- ✓ Wi-Fi Connect¹⁷
- ✓ Service Connect¹⁶
- ✓ Remote Connect²²
- ✓ Safety Connect^{®13}
- ✓ Drive Connect²⁰

Safety Features

- ✓ Toyota Safety Sense™ 2.5 (TSS 2.5)²⁷
- ✓ Star Safety System™
- ✓ Eight airbags³⁶
- ✓ Blind Spot Monitor (BSM)³⁷ with Rear Cross-Traffic Alert (RCTA)³⁸

Options and Packages

- ✓ Panoramic glass roof with front power tilt/slide moonroof
- ✓ XSE Weather Package includes:
 - Heated steering wheel
 - Rain-sensing variable intermittent windshield wipers with de-icer function
- ✓ XSE Advanced Technology Package includes:
 - Power front driver's seat with two-position memory function
 - Front and Rear Parking Assist with Automatic Braking (PA w/AB)⁴¹
 - Smart Key System on all doors and liftgate
 - Height-adjustable foot-activated power liftgate³⁹ with jam protection
 - Panoramic View Monitor⁴⁹ with 360-degree Overhead View in low-speed drive and reverse, and Curb View
 - Digital rearview mirror with HomeLink^{®42} universal transceiver
 - Qi-compatible wireless smartphone charging⁴³
- ✓ 11-speaker JBL^{®2} Premium Audio including subwoofer and amplifier
- ✓ Panoramic glass roof with front power tilt/slide moonroof

RAV4 MODELS



Hybrid Limited

Adds to or replaces features offered on Hybrid XLE Premium

Mechanical/Performance

- ✓ 41 city/38 highway/40 combined EPA-est. mpg³

Exterior Features

- ✓ Bi-LED projector low- and high-beam headlights with LED accent lights
- ✓ Dark gray metallic-colored hexagon patterned front grille
- ✓ Chrome-accented color keyed outside door handles with front-row touch sensors
- ✓ Puddle lights

Interior Features

- ✓ SofTex®-trimmed⁴⁰ seats
 - Heated front seats
- ✓ Dark-brown-accented interior, including dark-brown stitching on dash, doors and seats
- ✓ Blue ambient interior lighting
- ✓ 12.3-in. digital Multi-Information Display (MID) with hybrid power meter

Audio Multimedia

- ✓ 10.5-in. Toyota Audio Multimedia:
 - 10.5-in. touchscreen
 - Wireless Apple CarPlay^{®7}
 - Wireless Android Auto^{™10}
 - SiriusXM[®] with 3-month Platinum Plan trial subscription¹¹

Connected Services Trials¹²

4G network dependent

- ✓ Wi-Fi Connect¹⁷
- ✓ Service Connect¹⁶
- ✓ Remote Connect²²
- ✓ Safety Connect^{®13}
- ✓ Drive Connect²⁰

Safety Features

- ✓ Toyota Safety Sense™ 2.5 (TSS 2.5)²⁷
- ✓ Star Safety System™
- ✓ Eight airbags³⁶
- ✓ Blind Spot Monitor (BSM)³⁷ with Rear Cross-Traffic Alert (RCTA)³⁸
- ✓ Front and Rear Parking Assist with Automatic Braking (PA w/AB)⁴¹

Options and Packages

- ✓ Limited Grade Weather Package includes:
 - Heated steering wheel
 - Perforated heated and ventilated front seats
 - Rear outboard passenger heated seating with perforated inserts
 - Rain-sensing variable intermittent windshield wipers with de-icer function
- ✓ Limited Grade Advanced Technology Package includes:
 - Smart Key System on all doors and liftgate³⁹
 - Height-adjustable foot-activated power liftgate³⁹ with jam protection
 - Panoramic View Monitor⁴⁹ with 360-degree Overhead View in low-speed drive and reverse, and Curb View
 - Qi-compatible wireless smartphone charging⁴³
- ✓ Panoramic glass roof with front power tilt/slide moonroof



Prime SE

Adds to or replaces features offered on Hybrid XLE

Mechanical/Performance

- ✓ 2.5L 4-Cylinder Plug-in Hybrid system with 302 net hp
- ✓ Electronically-controlled Continuously Variable Transmission with sequential shift mode
- ✓ Electronic On-Demand All-Wheel Drive (AWD)
- ✓ Drive mode dial with SPORT, Eco and NORMAL modes, TRAIL mode, Auto EV/HV mode, and HV/EV Charge Hold
- ✓ 40 city/36 highway/38 combined EPA-est. mpg (hybrid mode)⁴
- ✓ 94 MPGe⁴
- ✓ 42-mile electric driving range⁵

Exterior Features

- ✓ Bi-LED projector low- and high-beam headlights with LED accent lights
- ✓ Black diamond-patterned bar front grille
- ✓ Silver-painted front lower spoiler
- ✓ Black-painted lower front bumper, overfenders, rocker panels, and rear bumper with black insert
- ✓ Height-adjustable power liftgate³⁹ with jam protection
- ✓ 18-in. 5-spoke black-painted and machined sport alloy wheels

Interior Features

- ✓ Dual zone automatic climate control system with rear-seat vents
- ✓ Fabric-trimmed seats with sporty red stitching and embossed seat inserts
- ✓ Heated front seats
- ✓ 7-in. Multi-Information Display (MID) with hybrid system indicator
- ✓ Smart Key System on front doors and liftgate with Push Button Start
- ✓ Leather-trimmed steering wheel
- ✓ Red-accented interior, including red stitching on dash and seats
- ✓ Black headliner

Audio Multimedia

- ✓ 8-in. Toyota Audio Multimedia:
 - 8-in. touchscreen
 - Wireless Apple CarPlay^{®7}
 - Wireless Android Auto^{™10}
 - SiriusXM[®] with 3-month Platinum Plan trial subscription¹¹

Connected Services Trials¹²

4G network dependent

- ✓ Wi-Fi Connect¹⁷
- ✓ Service Connect¹⁶
- ✓ Remote Connect²²
- ✓ Safety Connect^{®13}
- ✓ Drive Connect²⁰

Safety Features

- ✓ Toyota Safety Sense™ 2.5+ (TSS 2.5+)²⁷
- ✓ Star Safety System™
- ✓ Eight airbags³⁶
- ✓ Blind Spot Monitor (BSM)³⁷ with Rear Cross-Traffic Alert (RCTA)³⁸

Options and Packages

- ✓ Prime SE Weather and Moonroof Package includes:
 - Heated leather-trimmed steering wheel
 - Rear outboard passenger heated seating
 - Rain-sensing variable intermittent windshield wipers with de-icer function
 - Power tilt/slide moonroof with one-touch open/close



Prime XSE

Adds to or replaces features offered on Prime SE

Mechanical/Performance

- ✓ 40 city/36 highway/38 combined EPA-est. mpg (hybrid mode)⁴
- ✓ 94 MPGe⁴
- ✓ 42-mile electric driving range⁵

Exterior Features

- ✓ Vertical LED accent lights
- ✓ Black-painted outside mirrors
- ✓ Power tilt/slide moonroof with one-touch open/close
- ✓ 19-in. 5-spoke black-painted and machined sport alloy wheels

Interior Features

- ✓ SofTex®-trimmed⁴⁰ seats with sporty red stitching and fabric seat inserts
- ✓ Steering wheel-mounted paddle shifters
- ✓ 12.3-in. Multi-Information Display (MID) with hybrid system indicator
- ✓ Qi-compatible wireless smartphone charging⁴³

Audio Multimedia

- ✓ 10.5-in. Toyota Audio Multimedia:
 - 10.5-in. touchscreen
 - Wireless Apple CarPlay^{®7}
 - Wireless Android Auto^{™10}
 - SiriusXM[®] with 3-month Platinum Plan trial subscription¹¹

Connected Services Trials¹²

4G network dependent

- ✓ Wi-Fi Connect¹⁷
- ✓ Service Connect¹⁶
- ✓ Remote Connect²²
- ✓ Safety Connect^{®13}
- ✓ Drive Connect²⁰

Safety Features

- ✓ Toyota Safety Sense™ 2.5+ (TSS 2.5+)²⁷
- ✓ Star Safety System™
- ✓ Eight airbags³⁶
- ✓ Blind Spot Monitor (BSM)³⁷ with Rear Cross-Traffic Alert (RCTA)³⁸

Options and Packages

- ✓ Prime XSE Weather Package includes:
 - Heated leather-trimmed steering wheel — rain-sensing variable intermittent windshield wipers with de-icer function
- ✓ Premium Package includes:
 - 10-in. color Head-Up Display (HUD)
 - Panoramic glass roof with front power tilt/slide moonroof
 - Panoramic View Monitor⁴⁹ with 360-degree Overhead View in low-speed drive and reverse, and Curb View
 - SofTex®-trimmed⁴⁰ seats with sporty red accents and stitching
 - Heated and ventilated front seats; heated rear outboard seats
 - 8-way power-adjustable driver's seat with two-position memory function
 - 4-way power-adjustable front passenger seat
 - Digital rearview mirror with HomeLink^{®42} universal transceiver
 - Smart Key System on all doors
 - One 120V/1500W AC power outlet in cargo area⁴⁵
 - Height-adjustable, foot-activated power liftgate³⁹ with jam protection
 - Front and Rear Parking Assist with Automatic Braking (PA w/AB)⁴¹
- ✓ 11-speaker JBL^{®2} Premium Audio including subwoofer and amplifier

See numbered footnotes in Disclosures section.

RAV4 COLORS



Midnight Black Metallic



Blueprint



Cavalry Blue



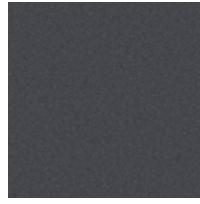
Lunar Rock



Ruby Flare Pearl⁴⁶



Supersonic Red⁴⁶



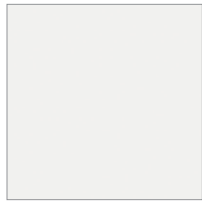
Magnetic Gray Metallic



Silver Sky Metallic



Wind Chill Pearl⁴⁶



Ice Cap

Available Ice Edge roof⁴⁶



Magnetic Gray Metallic, Lunar Rock, Cavalry Blue

Available Midnight Black Metallic roof



Wind Chill Pearl,⁴⁶ Silver Sky Metallic, Magnetic Gray Metallic, Cavalry Blue, Supersonic Red⁴⁶

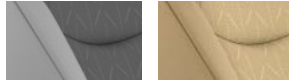
RAV4 TRIMS & WHEELS

LE fabric shown in Black



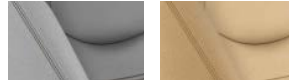
Nutmeg

XLE and Woodland fabric trim shown in Black



Light Gray Nutmeg

XLE Premium/Limited SofTex^{®40} shown in Black



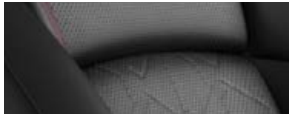
Light Gray Nutmeg

Adventure grade SofTex^{®40} shown in Black



Mocha

TRD Off-Road SofTex^{®40} shown in Black



Hybrid XSE SofTex^{®40} shown in Black/Blue



Prime SE fabric shown in Black/Red



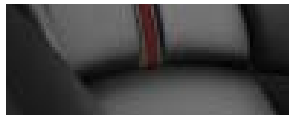
Hybrid SE fabric shown in Black/Blue



Prime XSE SofTex^{®40} shown in Black/Red



Prime XSE Premium SofTex^{®40} shown in Black/Red



LE 17-in. steel wheel with silver 6-spoke wheel cover



XLE/Hybrid LE/Hybrid XLE 17-in. 5-spoke light gray metallic alloy wheel



Adventure grade 19-in. split 5-spoke matte-gray alloy wheel



TRD Off-Road 18-in. 6-spoke matte-black TRD flow-formed alloy wheel



Hybrid XSE 18-in. multi-spoke black-painted sport alloy wheel



Limited/XLE Premium 19-in. multi-spoke Super Chrome-finished alloy wheel



Hybrid Limited 18-in. multi-spoke dark metallic-finished sport alloy wheel



Prime 18-in. 5-spoke black-painted and machined sport alloy wheel



Prime 19-in. 5-spoke black-painted and machined sport alloy wheel



Woodland Edition 18-in. 6-spoke bronze-colored flow-formed alloy wheel

RAV4 ACCESSORIES

This is a great way to add extra personality to your RAV4. Not every accessory is available in your area, so for a complete list of accessories, go to toyota.com/rav4/accessories.



In-vehicle safe by Console Vault®



Body side moldings



All-weather floor liners⁴⁸



Cargo liner⁵¹



Doorsill protectors



Roof rack cross bars



Integrated dashcam



Mudguards



Running boards

WARRANTIES

Every Toyota Car, Truck and SUV is built to exceptional standards. And that's not idle boasting. We back it up with these Limited Warranty Coverages:

Basic: 36 months/36,000 miles (all components other than normal wear and maintenance items).

Hybrid-Related Component Coverage: Hybrid-related components, including the battery control module, hybrid control module and inverter with converter, are covered for 8 years/100,000 miles. Refer to applicable *Warranty and Maintenance Guide* for details.

Hybrid Battery: HV battery is covered for 10 years or 150,000 miles, whichever comes first. Warranty coverage is subject to terms and conditions. Refer to applicable *Warranty and Maintenance Guide* for details.

Powertrain: 60 months/60,000 miles (engine, transmission/transaxle, drive system, seatbelts and airbags).

Rust-Through: 60 months/unlimited miles (corrosion perforation of sheet metal).

Emissions: Coverages vary under Federal and California regulations. Refer to applicable *Warranty and Maintenance Guide* for details.

Accessories: For Genuine Toyota Accessories purchased at the time of the new vehicle purchase, the Toyota Accessory Warranty coverage is in effect for 36 months/36,000 miles from the vehicle's in-service date, which is the same coverage as the Toyota New Vehicle Limited Warranty.

For Genuine Toyota Accessories purchased after the new vehicle purchase the coverage is 12 months, regardless of mileage, from the date the accessory was installed on the vehicle, or the remainder of any applicable new vehicle warranty, whichever provides greater coverage.

You may be eligible for transportation assistance if it's necessary that your vehicle be kept overnight for repairs covered under warranty. Please see your authorized Toyota dealership for further details.

For complete details about Toyota's warranties, please visit www.toyota.com, refer to the applicable *Warranty and Maintenance Guide* or see your Toyota dealer.

RAV4 FEATURES⁵²

S = Standard O = Optional P = Available as part of a package

Exterior	LE	XLE	XLE Premium	Adventure	TRD Off-Road	Limited	Hybrid LE	Hybrid XLE	Hybrid Woodland Edition	Hybrid XLE Premium	Hybrid SE	Hybrid XSE	Hybrid Limited	Prime SE	Prime XSE
17-in. steel wheels with silver 6-spoke wheel covers including temporary spare	S														
17-in. 5-spoke light gray metallic alloy wheels including temporary spare		S					S	S							
18-in. multi-spoke dark metallic-finished sport alloy wheels including temporary spare										S				S	
18-in. 6-spoke matte-black-painted TRD flow-formed alloy wheels with black lug nuts and temporary spare					S										
18-in. 6-spoke bronze-colored TRD flow-formed alloy wheels with bronze-colored lug nuts and temporary spare									S						
19-in. multi-spoke Super Chrome-finished alloy wheels including temporary spare			S			S									
19-in. split 5-spoke matte-gray alloy wheels including temporary spare				S											
18-in. multi-spoke black-gray sport alloy wheels including temporary spare											S	S			
18-in. 5-spoke black-painted and machined sport alloy wheels including temporary spare														S	
19-in. 5-spoke black-painted and machined sport alloy wheels including temporary spare															S
Multi-LED headlights with black bezels and Automatic High Beams (AHB) ³¹	S						S								
LED projector headlights with chrome-finished bezels, Automatic High Beams (AHB) ³¹ and auto on/off		S	S	S	S			S	S	S					
Bi-LED projector low- and high-beam headlights with LED accent lights, Automatic High Beams (AHB) ³¹ and auto on/off						S					S	S	S	S	S
LED Daytime Running Lights (DRL)	S	S	S	S	S	S	S	S	S	S	S	S	S	S	S
Integrated LED fog lights			S	S	S	S			S	S				S	
Vertical LED accent lights											S				S
LED taillights	S	S	S	S	S	S	S	S	S	S	S	S	S	S	S
Black hexagon-patterned bar front grille	S	S	S				S	S	S	S	S	S			
Unique split-bar front upper grille				S	S				S						
Dark gray metallic-colored hexagon-patterned bar front grille						S								S	
Black diamond-patterned front grille														S	S
Color-keyed upper front bumper, and black lower front bumper, overfenders and rear bumper	S	S	S				S	S	S	S					
Unique color-keyed upper and black lower front bumper, larger black overfenders, and black rear bumper with silver insert				S											
Unique color-keyed upper and black lower front bumper, larger black overfenders, and black rear bumper with Magnetic Gray Metallic insert					S										
Color-keyed upper and black-painted lower front bumper, overfenders, and rear bumper with metallic gray insert												S			
Color-keyed upper bumper, and black lower front bumper, black overfenders, and rear bumper with metallic gray insert						S								S	
Color-keyed upper and black-painted lower front bumper, overfenders, mirrors, roof, rocker panels, and rear bumper with black insert															S
Color-keyed upper and black-painted lower front bumper, overfenders, rocker panels, and rear bumper with black insert															S
Silver-painted front lower spoiler														S	S
Two-tone exterior color ⁴⁶				O	O						S				S
Black RAV4 and TRD Off-Road badging					S										
Black RAV4 and Adventure badging				S											
Black RAV4 badging and Woodland Edition decal									S						
Black power outside mirrors with folding feature	S						S								
Color-keyed heated power outside mirrors with turn signal and blind spot warning ³⁷ indicators, and folding feature	P	S	S	S			P	S	S	S	S			S	
Black-painted heated power outside mirrors with turn signal and blind spot warning ³⁷ indicators, and folding feature				O	S							S			S

See numbered footnotes in Disclosures section.

RAV4 FEATURES⁵²

S = Standard O = Optional P = Available as part of a package

Exterior (continued)	LE	XLE	XLE Premium	Adventure	TRD Off-Road	Limited	Hybrid LE	Hybrid XLE	Hybrid Woodland Edition	Hybrid XLE Premium	Hybrid SE	Hybrid XSE	Hybrid Limited	Prime SE	Prime XSE
Color-keyed heated power outside mirrors with turn signal and blind spot warning ³⁷ indicators, puddle lights and folding feature						S							S		
Color-keyed outside door handles	S						S								
Color-keyed outside door handles with touch-sensor lock/unlock feature on front doors		S	S	S	S			S	S	S	S	S		S	S
Chrome-accented color-keyed outside door handles with touch-sensor lock/unlock feature on front doors						S							S		
Power tilt/slide moonroof with one-touch open/close		P	S	P	S	S		P		S	P	S	S	P	S
Low-profile black roof rails		S	S			S	S	S	S	S	S	S	S	S	S
Unique raised black roof rails				S	S										
Height-adjustable power liftgate ³⁹ with jam protection		P	S	P	S	S		P			P	S	S	S	S
Aerodynamic underbody panels with vortex generators, front and rear wheel spats, and integrated rear spoiler	S	S	S												
Active grille shutters; aerodynamic underbody panels with vortex generators, front and rear wheel spats, and integrated rear spoiler				S	S	S	S	S	S	S	S	S	S	S	S
Dual chrome-tipped exhaust	S	S	S	S	S	S	S	S		S	S	S	S	S	S
Dual black chrome-tipped exhaust									S						
Privacy glass on all rear side, quarter and liftgate windows	S	S	S	S	S	S	S	S	S	S	S	S	S	S	S
Acoustic noise-reducing front side windows														S	S
Intermittent windshield wipers and intermittent rear window wiper	S						S								
Variable intermittent windshield wipers and intermittent rear window wiper		S	S	S	S	S		S	S	S	S	S	S	S	S
Color-keyed roof-mounted shark-fin antenna	S	S	S	S	S	S	S	S	S	S	S	S	S	S	S
Blue-painted shock absorber											S	S			
Red-painted shock absorber					S										S
Stainless steel front skid plate					S										

Interior

Climate control system with dust and pollen filter and rear-seat vents	S														
Dual zone automatic climate control system with dust and pollen filter and rear-seat vents		S					S	S	S					S	
Dual zone automatic climate control system with dust and pollen filter, front center vent flow controls and rear-seat vents			S	S	S	S				S	S	S	S		S
Qi-compatible wireless smartphone charging ⁴³ with charge indicator light			P		P	P				P		P	P		S
Digital speedometer and instrumentation with analog tachometer, coolant temperature, and fuel gauges; 7-in. digital Multi-Information Display (MID) with customizable settings, odometer, tripmeters, clock, outside temperature, rear passenger seatbelt indicators, fuel economy information, trip timer, shift-position and scheduled maintenance indicators, and warning messages	S	S	S												
Digital speedometer and instrumentation with analog hybrid system indicator, battery level meter and fuel gauge; 12.3-in. digital Multi-Information Display (MID) with customizable settings, odometer, tripmeters, clock, outside temperature, rear passenger seatbelt indicators, hybrid energy monitor, battery charge meter, fuel economy information, trip timer, shift-position and scheduled maintenance indicators, and warning messages				S	S	S									
Digital speedometer and instrumentation with analog hybrid power meter, coolant temperature, and fuel gauges; 7-in. digital Multi-Information Display (MID) with customizable settings, odometer, tripmeters, clock, outside temperature, rear passenger seatbelt indicators, hybrid energy monitor, fuel economy information, trip timer, shift-position and scheduled maintenance indicators, and warning messages							S	S	S	S	S				
Digital speedometer and instrumentation with analog fuel gauge; 12.3-in. digital Multi-Information Display (MID) with customizable settings, odometer, tripmeters, clock, outside temperature, rear passenger seatbelt indicators, hybrid energy monitor, battery charge meter, fuel economy information, trip timer, shift-position and scheduled maintenance indicators, and warning messages														S	S

See numbered footnotes in Disclosures section.

RAV4 FEATURES⁵²

S = Standard O = Optional P = Available as part of a package

Interior (continued)	LE	XLE	XLE Premium	Adventure	TRD Off-Road	Limited	Hybrid LE	Hybrid XLE	Hybrid Woodland Edition	Hybrid XLE Premium	Hybrid SE	Hybrid XSE	Hybrid Limited	Prime SE	Prime XSE
Fabric-trimmed seats; 6-way adjustable front driver's seat; 4-way adjustable front passenger seat with seatback pocket	S						S								
Fabric-trimmed seats with embossed polygonal-design seat inserts; 8-way power-adjustable front driver's seat with lumbar support; 4-way adjustable front passenger seat with seatback pocket		S						S	S						
Fabric-trimmed seats with sporty blue stitching and embossed seat inserts; 8-way power-adjustable front driver's seat with lumbar support; 4-way adjustable front passenger seat with seatback pocket											S				
Fabric-trimmed seats with sporty red stitching and embossed seat inserts; heated front seats; 8-way power-adjustable front driver's seat with lumbar support; 4-way adjustable front passenger seat with seatback pocket															S
SofTex®-trimmed ⁴⁰ seats; 8-way power-adjustable front driver's seat with lumbar support; 4-way adjustable front passenger seat with seatback pocket			S							S					
SofTex®-trimmed ⁴⁰ seats with orange accents and stitching, and embossed seat inserts; 8-way power-adjustable front driver's seat with lumbar support; 4-way adjustable front passenger seat with seatback pocket				S											
SofTex®-trimmed ⁴⁰ seats with red stitching, embossed seat inserts and TRD stitching in front headrests; 8-way power-adjustable driver's seat with lumbar support; 4-way adjustable front passenger seat with seatback pocket					S										
SofTex®-trimmed ⁴⁰ seats with sporty blue stitching and fabric seat inserts; heated front seats; 8-way power-adjustable front driver's seat with lumbar support; 4-way adjustable front passenger seat with seatback pocket												S			
SofTex®-trimmed ⁴⁰ seats, heated front seats; 8-way power-adjustable driver's seat with two-position memory function and lumbar support; 4-way adjustable front passenger seat with seatback pocket						S								S	
SofTex®-trimmed ⁴⁰ seats with sporty red stitching and fabric seat inserts; heated front seats; 8-way power-adjustable front driver's seat with lumbar support and seatback pocket; 4-way adjustable front passenger seat with seatback pocket															S
60/40 split reclining fold-flat rear seat with center armrest and cup holders	S	S	S	S	S	S	S	S	S	S	S	S	S	S	S
Heated front seating		P	P	P				P		P	P	S		S	S
Heated and ventilated front seating					P	S								S	
Black carpet flooring with driver-side footrest	S	S	S	S	S	S	S	S	S	S	S	S	S	S	S
TRD all-weather floor mats and cargo liner ⁴⁸					S										
Woodland all-weather floor mats and cargo liner ⁴⁸									S						
Urethane tilt/telescopic 3-spoke steering wheel with controls for audio, Multi-Information Display (MID), Bluetooth ^{®53} hands-free phone, voice-command, Dynamic Radar Cruise Control (DRCC), ²⁹ Lane Departure Alert (LDA) ³⁰ and Lane Trace Assist (LTA) ³²	S	S					S	S	S						
Leather-trimmed tilt/telescopic 3-spoke steering wheel with silver accent and controls for audio, Multi-Information Display (MID), Bluetooth ^{®53} hands-free phone, voice-command, Dynamic Radar Cruise Control (DRCC), ²⁹ Lane Departure Alert (LDA) ³⁰ and Lane Trace Assist (LTA) ³²			S	S	S	S				S	S	S	S		
Leather-trimmed tilt/telescopic three-spoke steering wheel with silver accent and red-stitching, and controls for audio, Multi-Information Display (MID), Bluetooth ^{®53} hands-free phone, voice-command, Dynamic Radar Cruise Control (DRCC), ²⁹ Lane Departure Alert (LDA) ³⁰ and Lane Trace Assist (LTA) ³²															S
Leather-trimmed tilt/telescopic three-spoke steering wheel with silver accent and red-stitching, paddle shifters, and controls for audio, Multi-Information Display (MID), Bluetooth ^{®53} hands-free phone, voice-command, Dynamic Radar Cruise Control (DRCC), ²⁹ Lane Departure Alert (LDA) ³⁰ and Lane Trace Assist (LTA) ³²															S

RAV4 FEATURES⁵²

S = Standard O = Optional P = Available as part of a package

Interior (continued)	LE	XLE	XLE Premium	Adventure	TRD Off-Road	Limited	Hybrid LE	Hybrid XLE	Hybrid Woodland Edition	Hybrid XLE Premium	Hybrid SE	Hybrid XSE	Hybrid Limited	Prime SE	Prime XSE
Turn signal stalk with headlight controls and one-touch 3-blink lane change turn signals	S	S	S	S	S	S	S	S	S	S	S	S	S	S	S
Shift lever with sequential mode	S	S					S	S	S						
Leather-trimmed shift lever with sequential mode			S	S	S	S				S	S	S	S	S	S
Steering wheel-mounted paddle shifters															S
Soft-touch dash and armrests, with stitched dash accents	S	S					S	S	S		S			S	
Soft-touch dash and armrests, with stitched dash and center console accents, and anti-slip interior door grip			S							S					
Soft-touch dash, door and armrests with stitched dash, door and center console accents, and anti-slip interior door grip				S	S	S						S	S		S
Black in-dash storage trays	S	S					S	S	S		S				
Black anti-slip in-dash storage trays			S	S	S					S		S			S
Orange-accented interior, including orange stitching on dash, doors and seat, and orange cup holder trim and black anti-slip in-dash storage trays				S											
Red-accented interior, including red stitching on dash, doors and seat, and red cup holder trim and black anti-slip in-dash storage trays					S										
Blue-accented interior, including blue stitching on dash, doors and seat, and black anti-slip in-dash storage trays with blue ambient lighting												S			
Blue-accented interior, including blue stitching on dash and seat, and black in-dash storage trays											S				
Dark brown-accented interior, including dark brown stitching on dash, door and seat stitching, and dark brown cup holder trim and anti-slip in-dash storage trays with blue ambient lighting						S							S		
Red-accented interior, including red stitching on dash and seat, and black in-dash storage trays														S	
Red-accented interior, including red stitching on dash, doors, console, and seat, and black anti-slip in-dash storage trays with blue ambient lighting															S
Ash Gray fabric-trimmed headliner	S	S	S	S	S	S	S	S	S	S			S		
Black fabric-trimmed headliner											S	S		S	S
Silver interior door handles		S	S	S	S	S		S	S	S	S	S	S		S
Black interior door handles	S						S							S	
Remote keyless entry system with lock, unlock, panic functions and remote illuminated entry	S						S								
Smart Key System on front doors and liftgate with Push Button Start, remote keyless entry system with lock, unlock, panic functions and remote illuminated entry		S		S				S	S		S				
Smart Key System on front doors and liftgate with Push Button Start, remote keyless entry system with lock, unlock, and panic functions, power liftgate ³⁹ and remote illuminated entry		P	S	P	S	S		P		S	P	S	S	S	S
Power windows with auto up/down and jam protection in all positions	S	S	S	S	S	S	S	S	S	S	S	S	S	S	S
Rear liftgate window defogger	S	S	S	S	S	S	S	S	S	S	S	S	S	S	S
Power door locks with shift-linked automatic lock/unlock feature	S	S	S	S	S	S	S	S	S	S	S	S	S	S	S
Day/night rearview mirror	S	S	S	S	S		S	S	S	S	S			S	
Auto-dimming rearview mirror with HomeLink ⁴² universal transceiver						S							S	S	S
Digital rearview mirror with HomeLink ⁴² universal transceiver			P		P	P				P		P	P		P
Overhead console with maplights, sunglasses storage and Safety Connect ⁴³ button	S	S		S			S	S	S		S			S	
Overhead console with maplights, sunglasses storage, Safety Connect ⁴³ button and power tilt/slide moonroof controls		P	S	P	S	S		P		S	P	S	S	P	S
Sun visors with illuminated vanity mirrors	S						S								
Sun visors with sliding extensions and illuminated vanity mirrors		S	S	S	S	S		S	S	S	S	S	S	S	S
Center console with covered storage compartment, two cup holders, drive mode, Electronic Parking Brake (EPB) ⁵⁴ and automatic Brake Hold ⁵⁵ controls, and front storage tray	S	S	S			S	S	S	S	S	S	S	S	S	S

See numbered footnotes in Disclosures section.

RAV4 FEATURES⁵²

S = Standard O = Optional P = Available as part of a package

Interior (continued)	LE	XLE	XLE Premium	Adventure	TRD Off-Road	Limited	Hybrid LE	Hybrid XLE	Hybrid Woodland Edition	Hybrid XLE Premium	Hybrid SE	Hybrid XSE	Hybrid Limited	Prime SE	Prime XSE
Center console with covered storage compartment, two cup holders, drive mode, Multi-Terrain Select (MTS), Electric Parking Brake (EPB) ⁵⁴ and automatic Brake Hold ⁵⁵ controls, and front storage tray	S (AWD)	S (AWD)	S (AWD)	S	S	S (AWD)									
Passenger-side lockable glove compartment	S	S	S	S	S	S	S	S	S	S	S	S	S	S	S
Height-adjustable rear cargo area deck board	S	S	S	S	S	S	S	S	S	S	S	S	S	S	S
Cargo area tonneau cover	P	S	S	S	S	S	P	S	S	S	S	S	S	S	S
Cargo area deckside-mounted storage net ⁵¹				S	S	S						S	S		
TRD cargo area liner					S										
Three USB ports ³⁴ — USB media port in front storage tray and two additional charge ports in front center console	S						S								
Five USB ports ³⁴ — USB media port in front storage tray and four additional charge ports (two in front center console and two rear seat ports on the back of center console)		S	S	S	S	S		S	S	S	S	S	S	S	S
One 12V/120W auxiliary power outlet ⁵⁶ in front instrument panel storage tray and one 12V/120W auxiliary power outlet ⁵⁶ in second row	S						S								
One 12V/120W auxiliary power outlet ⁵⁶ in front instrument panel storage tray and one 12V/120W auxiliary power outlet ⁵⁶ in cargo area		S	S	S	S	S		S	S	S	S	S	S	S	S
One 120V/100W AC power outlet ⁴⁵ in cargo area				S	S										
Blue ambient illumination for in-dash shelves, center console cup holders and in front footwells						S						S	S		S
LED front-seat reading lights, dome light and cargo area light	S	S	S	S	S	S	S	S	S	S	S	S	S	S	S
Front-door storage pockets with bottle holders	S	S	S	S	S	S	S	S	S	S	S	S	S	S	S
2 front and 2 rear cup holders; 2 front and 2 rear bottle holders	S	S	S	S	S	S	S	S	S	S	S	S	S	S	S
Electric Parking Brake (EPB) ⁵⁴ with Brake Hold ⁵⁵	S	S	S	S	S	S	S	S	S	S	S	S	S	S	S
Audio Multimedia															
8-in. Toyota Audio Multimedia, six speakers, with wireless Apple CarPlay ⁸⁷ & Android Auto ^{TM10} compatible, SiriusXM [®] with 3-month Platinum Plan trial subscription. ¹¹ See toyota.com/audio-multimedia for details.	S	S	S	S			S	S	S	S	S				
10.5-in. Toyota Audio Multimedia, six speakers, with wireless Apple CarPlay ⁸⁷ & Android Auto ^{TM10} compatible, SiriusXM [®] with 3-month Platinum Plan trial subscription. ¹¹ See toyota.com/audio-multimedia for details.			P	P	S	S				P		S	S		S
11-speaker JBL ^{®22} Premium Audio including amplifier and subwoofer		P	P	P	A	S				P		P	S		S
Connected Services¹²															
Wi-Fi Connect ¹⁷ — with AT&T Wi-Fi hotspot and Integrated Streaming (Apple Music ^{®18} and Amazon Music ^{TM19}) compatibility. Subscription required. 30 days or up to 3 GB trial included. ¹⁷ 4G network dependent.	S	S	S	S	S	S	S	S	S	S	S	S	S	S	S
Service Connect ¹⁶ — receive personalized maintenance updates and vehicle health reports. Subscription required. 4G network dependent. 10-year trial included. ¹⁶	S	S	S	S	S	S	S	S	S	S	S	S	S	S	S
Remote Connect ²² — remotely interact with your vehicle through the Toyota app ⁵⁷ via your smartwatch ²⁴ Amazon Alexa-enabled ²⁵ devices, and Google Assistant TM -enabled ²⁶ devices. Allowing you to lock/unlock doors, start and stop the vehicle, locate your last parked location, check vehicle status and monitor guest drivers. Subscription required. 4G network dependent. 1-year trial included. ²²	S	S	S	S	S	S	S	S	S	S	S	S	S	S	S
Safety Connect ⁸¹³ — includes Emergency Assistance Button, Enhanced Roadside Assistance, ¹⁴ Automatic Collision Notification, and Stolen Vehicle Locator. ¹⁵ Subscription required. 4G network dependent. 1-year trial included. ¹³	S	S	S	S	S	S	S	S	S	S	S	S	S	S	S
Drive Connect ²⁰ with 3-year trial subscription ³⁵ — includes Cloud Navigation ²⁰ with Google Points-of-Interest (POI) data, Intelligent Assistant ²⁰ with Hey, Toyota, and Destination Assist. ²¹ Subscription required. 4G network dependent.	S	S	S	S	S	S	S	S	S	S	S	S	S	S	S

See numbered footnotes in Disclosures section.

RAV4 FEATURES⁵²

S = Standard O = Optional P = Available as part of a package

Safety/Convenience

	LE	XLE	XLE Premium	Adventure	TRD Off-Road	Limited	Hybrid LE	Hybrid XLE	Hybrid Woodland Edition	Hybrid XLE Premium	Hybrid SE	Hybrid XSE	Hybrid Limited	Prime SE	Prime XSE
Toyota Safety Sense™ 2.5 (TSS 2.5) ²⁷ — Pre-Collision System w/Pedestrian Detection (PCS w/PD), ²⁸ Full-Speed Range Dynamic Radar Cruise Control (DRCC), ²⁹ Lane Departure Alert w/Steering Assist (LDA w/SA), ³⁰ Lane Tracing Assist (LTA), ³² Automatic High Beams (AHB), ³¹ Road Sign Assist (RSA) ³³	S	S	S	S	S	S	S	S	S	S	S	S	S		
Toyota Safety Sense™ 2.5+ (TSS 2.5+) ²⁷ — Pre-Collision System with Pedestrian Detection (PCS w/PD), ²⁸ Lane Departure Alert with Steering Assist (LDA w/SA), ³⁰ Automatic High Beams (AHB), ³¹ Lane Tracing Assist (LTA), ³² Road Sign Assist (RSA) ³³ and Full-Speed Range Dynamic Radar Cruise Control (DRCC) ²⁹														S	S
STAR SAFETY SYSTEM™ Star Safety System™ — includes Enhanced Vehicle Stability Control (VSC), ⁵⁰ Traction Control (TRAC), Anti-lock Brake System (ABS), Electronic Brake-force Distribution (EBD), Brake Assist (BA) ⁵⁹ and Smart Stop Technology® (SST) ⁶⁰	S	S	S	S	S	S	S	S	S	S	S	S	S	S	S
Eight airbags ³⁶ — includes driver and front passenger Advanced Airbag System, driver and front passenger seat-mounted side airbags, driver's knee airbag, front passenger seat cushion airbag, and front and rear side curtain airbags	S	S	S	S	S	S	S	S	S	S	S	S	S	S	S
3-point seatbelts for all seating positions; driver-side Emergency Locking Retractor (ELR) and Automatic/Emergency Locking Retractor (ALR/ELR) on all passenger seatbelts	S	S	S	S	S	S	S	S	S	S	S	S	S	S	S
Adjustable front shoulder anchors	S	S	S	S	S	S	S	S	S	S	S	S	S	S	S
Front and outboard second-row seatbelts with seatbelt pretensioners with force limiters	S	S	S	S	S	S	S	S	S	S	S	S	S	S	S
Backup camera ⁶¹ with projected path	S	S	S	S			S	S	S	S	S			S	
Backup camera ⁶¹ with dynamic gridlines		P	P	P	S	S		P		P		S	S		S
LATCH (Lower Anchors and Tethers for Children) includes lower anchors on outboard rear seats and tether anchors on all rear seats	S	S	S	S	S	S	S	S	S	S	S	S	S	S	S
Child-protector rear door locks and power window lockout control	S	S	S	S	S	S	S	S	S	S	S	S	S	S	S
Front and rear side-impact door beams	S	S	S	S	S	S	S	S	S	S	S	S	S	S	S
Tire Pressure Monitor System (TPMS) ⁶²	S	S	S	S	S	S	S	S	S	S	S	S	S	S	S
Blind Spot Monitor (BSM) ³⁷ with Rear Cross-Traffic Alert (RCTA) ³⁸	P	S	S	S	S	S	P	S	S	S	S	S	S	S	S
Front and Rear Parking Assist with Automatic Braking (PA w/AB) ⁴¹			P		P	S				P		P	S		P
Vehicle Proximity Notification System (VPNS) ⁶³							S	S	S	S	S	S	S	S	S
Trailer-Sway Control (TSC) ⁶⁴	S	S	S	S	S	S	S	S	S	S	S	S	S	S	S
Hill Start Assist Control (HAC) ⁶⁵	S	S	S	S	S	S	S	S	S	S	S	S	S	S	S
Downhill Assist Control (DAC) ⁶⁶				S	S	S (AWD)									
Anti-theft system with alarm and engine immobilizer ⁶⁷		P	P	P	S	S		P		P	P	S	S		S
Anti-theft system with engine immobilizer ⁶⁷	S	S	S	S			S	S	S	S	S			S	

Packages and Options

Rear cargo area cover	O	S	S	S	S	S	O	S	S	S	S	S	S	S	S
Blind Spot Monitor (BSM) ³⁷ with Rear Cross-Traffic Alert (RCTA) ³⁸ — includes color-keyed heated power outside mirrors with turn signal and blind spot warning ³⁴ indicators	O	S	S	S	S	S	O	S	S	S	S	S	S	S	S
Panoramic glass roof with front power tilt/slide moonroof						O						O	O		O
Two-tone exterior color				O	O								S		S
Premium paint ⁴⁶	O	O	O	O	O	O	O	O	O	O	O	O	O	O	O
Panoramic glass roof						O						O	O		
Rear outboard passenger heated seating						P							P	P	P
10.5-in. Toyota Audio Multimedia, six speakers, with wireless Apple CarPlay ⁸⁷ & Android Auto ^{TM10} compatible, SiriusXM [®] with 3-month Platinum Plan trial subscription! ¹¹ See toyota.com/audio-multimedia for details.			P		S					P		S	S		S
11-speaker JBL ^{®2} Premium Audio including amplifier and subwoofer			P	P	P	S				P		P	S		P

RAV4 FEATURES⁵²

S = Standard O = Optional P = Available as part of a package

Packages and Options (continued)	LE	XLE	XLE Premium	Adventure	TRD Off-Road	Limited	Hybrid LE	Hybrid XLE	Hybrid Woodland Edition	Hybrid XLE Premium	Hybrid SE	Hybrid XSE	Hybrid Limited	Prime SE	Prime XSE	
XLE Grade Weather Package — includes heated leather-trimmed steering wheel, heated front seats and rain-sensing variable intermittent windshield wipers with de-icer function		P						P								
XLE Premium Grade Weather Package — includes heated leather-trimmed steering wheel, heated front seats, 8-way power-adjustable driver's seat with two-position memory function and lumbar support, and rain-sensing variable intermittent windshield wipers with de-icer function			P							P						
Adventure Grade Weather Package — includes heated steering wheel, heated front seats, and rain-sensing variable intermittent windshield wipers with de-icer function				P												
TRD Off-Road Grade Weather Package — includes heated steering wheel, perforated heated and ventilated front seats, and rain-sensing variable intermittent windshield wipers with de-icer function					P											
Hybrid XSE Grade Weather Package — includes heated steering wheel and rain-sensing variable intermittent windshield wipers with de-icer function												P				
Limited Grade Weather Package — includes heated steering wheel, perforated heated and ventilated front seats, rear outboard passenger heated seating with perforated inserts, and rain-sensing variable intermittent windshield wipers with de-icer function						P								P		
Prime SE Weather and Moonroof Package — includes heated leather-trimmed steering wheel, rear outboard passenger heated seating, rain-sensing variable intermittent windshield wipers with de-icer function, and power tilt/slide moonroof with one-touch open/close															P	
Prime XSE Weather Package — includes heated leather-trimmed steering wheel and rain-sensing variable intermittent windshield wipers with de-icer function																P
XLE Grade Convenience Package — includes height-adjustable power liftgate ³⁹ with jam protection and power tilt/slide moonroof with one-touch open/close		P						P								
Adventure Grade Convenience Package — includes height-adjustable power liftgate ³⁹ with jam protection and power tilt/slide moonroof with one-touch open/close				P												
Hybrid SE Grade Convenience Package — includes height-adjustable power liftgate ³⁹ with jam protection and power tilt/slide moonroof with one-touch open/close												P				
XLE Premium Grade Technology Package — includes Front and Rear Parking Assist with Automatic Braking (PA w/AB), ⁴¹ digital display rearview mirror with HomeLink ⁴² universal transceiver, and Qi-compatible wireless smartphone charging ⁴³ with charge indicator light			P							P						
TRD Off-Road Grade Technology Package — includes Front and Rear Parking Assist with Automatic Braking (PA w/AB), ⁴¹ and Qi-compatible wireless smartphone charging ⁴³ with charge indicator light					P											
Hybrid XSE Grade Technology Package — includes power front driver's seat with two-position memory function; Front and Rear Parking Assist with Automatic Braking (PA w/AB), ⁴¹ Smart Key System on all doors and liftgate; ³⁹ height-adjustable foot-activated power liftgate ³⁹ with jam protection; Panoramic View Monitor ⁴⁹ with 360-degree Overhead View in low-speed drive and reverse, and Curb View; digital rearview mirror with HomeLink ⁴² universal transceiver; and Qi-compatible wireless smartphone charging ⁴³ with charge indicator light															P	
Limited Grade Advanced Technology Package — includes Smart Key System on all doors and liftgate; ³⁹ height-adjustable foot-activated power liftgate ³⁹ with jam protection; Panoramic View Monitor ⁴⁹ with 360-degree Overhead View in low-speed drive and reverse, and Curb View; digital rearview mirror with HomeLink ⁴² universal transceiver; and Qi-compatible wireless smartphone charging ⁴³ with charge indicator light						P										P

See numbered footnotes in Disclosures section.

RAV4 FEATURES⁵²

S = Standard O = Optional P = Available as part of a package

Packages and Options (continued)

LE XLE XLE Premium Adventure TRD Off-Road Limited Hybrid LE Hybrid XLE Hybrid Woodland Edition Hybrid XLE Premium Hybrid SE Hybrid XSE Hybrid Limited Prime SE Prime XSE

Prime XSE Premium Package — includes 10-in. color Head-Up Display (HUD) with speedometer, navigation and Hybrid System Indicator; panoramic glass roof with front power tilt/slide moonroof; Panoramic View Monitor⁴⁹ with 360-degree Overhead View in low-speed drive and reverse, and Curb View; unique SofTex[®]-trimmed⁴⁰ seats with sporty red accents and stitching; heated and ventilated front seats; heated rear outboard seats; 8-way power-adjustable driver's seat with two-position memory function; 4-way power adjustable front passenger seat with seatback pocket; digital rearview mirror with HomeLink^{®42} universal transceiver; Smart Key System on all doors; one 120V/1500W AC power outlet⁴⁵ in cargo area; height-adjustable, foot-activated power liftgate³⁹ with jam protection; Front and Rear Parking Assist with Automatic Braking (PA w/AB)⁴¹

P

RAV4 SPECIFICATIONS

S = Standard O = Optional P = Available as part of a package

Mechanical/Performance

	LE	XLE	XLE Premium	Adventure	TRD Off-Road	Limited	Hybrid LE	Hybrid XLE	Hybrid Woodland Edition	Hybrid XLE Premium	Hybrid SE	Hybrid XSE	Hybrid Limited	Prime SE	Prime XSE	
ENGINE																
Plug-in Hybrid engine: 2.5-Liter Dynamic Force 4-Cylinder with SPORT, Eco, NORMAL modes, TRAIL mode, EV/HV mode and HV/EV Charge Hold; 302 combined net hp; internal combustion engine with 176 hp @ 5300 rpm; electric motor power output (front/rear) 179/53 hp (134/40 kW); torque (front/rear) 199/89 lb.-ft.; battery 355.2V														S	S	
Hybrid engine: 2.5-Liter Dynamic Force 4-Cylinder with SPORT, Eco, NORMAL, EV, ⁶⁰ TRAIL drive modes; 219 combined net hp; internal combustion engine with 176 hp @ 5300 rpm; electric motor power output (front/rear) 118/54 hp (88/40 kW); torque (front/rear) 149/89 lb.-ft.; battery 259.0V							S	S	S	S	S	S	S			
2.5-Liter Dynamic Force 4-Cylinder DOHC D-4S Injection with Dual Variable Valve Timing with intelligence (VVT-i), with SPORT, Eco, NORMAL Modes, 203 hp @ 6600 rpm; 184 lb.-ft. @ 5000 rpm	S	S	S	S	S	S										
Stop and Start Engine System (S&S) ⁶⁸	S (AWD)	S	S													
Compression ratio: 14.0:1							S	S	S	S	S	S	S	S	S	
Compression ratio: 13.0:1	S	S	S	S	S	S										
Induction system: (D-4S) Dual-Injection (Direct-Injection and Port-injection) EFI with Electronic Throttle Control System with intelligence (ETCS-i)	S	S	S	S	S	S	S	S	S	S	S	S	S	S	S	
Emission rating: Super Ultra Low Emission Vehicle (SULEV)							S	S	S	S	S	S	S	S	S	
Emission rating: Ultra Low Emission Vehicle (ULEV)	S	S	S	S	S	S										
HV ELECTRIC MOTOR																
Power output (front/rear): 118/54 hp (88/40 kW)							S	S	S	S	S	S	S			
Torque (front/rear): 149/89 lb.-ft. (202/121 N·m)							S	S	S	S	S	S	S			
Power output (front/rear) 179/53 hp (134/40 kW)														S	S	
Torque (front/rear) 199/89 lb.-ft.														S	S	
HV TRACTION BATTERY																
Type: Sealed Lithium-ion (Li-ion)										S	S	S	S	S	S	
Type: Nickel-Metal Hydride (Ni-MH) 244.8V							S	S	S							
Voltage: 259.0V										S	S	S	S			
Voltage: 355.2V														S	S	
CHARGING																
6.6kW onboard charger														S	S	
TRANSMISSION																
Direct Shift 8-speed Electronically Controlled automatic Transmission with intelligence (ECT-i) and sequential shift mode	S	S	S	S	S	S										
Electronically controlled Continuously Variable Transmission (ECVT) with sequential shift mode							S	S	S	S	S	S	S	S	S	
Engine oil cooler, automatic transmission fluid cooler and upgraded 150-amp alternator				S	S											
Engine oil cooler, automatic transmission fluid cooler and hybrid system cooler							S	S	S	S	S	S	S	S	S	
DRIVETRAIN																
Front-Wheel Drive (FWD)	S	S	S			S										
All-Wheel Drive (AWD)	S (AWD)	S (AWD)	S (AWD)													
Dynamic Torque Vectoring All-Wheel Drive (TV-AWD) with Rear Driveline Disconnect				S	S	S (AWD)										
Electronic On-Demand All-Wheel Drive (AWD)							S	S	S	S	S	S	S	S	S	
All-Wheel Drive Integrated Management (AIM) with Multi-Information Display (MID) monitor		S (AWD)	S (AWD)	S	S	S (AWD)	S	S	S	S	S	S	S	S	S	
CAPABILITY																
Ground clearance (in.)	8.4	8.4	8.6	8.6	8.6	8.6	8.1	8.1	8.1	8.1	8.1	8.1	8.1	8.1	8.2	
Approach/departure angle (degrees)	19.0/21.0	19.0/21.0	19.0/21.0	19.0/21.0	19.0/21.0	19.0/21.0	19.0/21.0	19.0/21.0	19.0/21.0	19.0/21.0	19.0/21.0	19.0/21.0	19.0/21.0	19.0/21.0	19.5/21.5	
Hill Start Assist Control (HAC) ⁶⁵	S	S	S	S	S	S	S	S	S	S	S	S	S	S	S	

RAV4 SPECIFICATIONS

S = Standard O = Optional P = Available as part of a package

Mechanical/Performance (continued)

	LE	XLE	XLE Premium	Adventure	TRD Off-Road	Limited	Hybrid LE	Hybrid XLE	Hybrid Woodland Edition	Hybrid XLE Premium	Hybrid SE	Hybrid XSE	Hybrid Limited	Prime SE	Prime XSE	
DRIVE MODES																
SPORT, Eco and NORMAL drive modes	S	S	S	S	S	S										
Multi-Terrain Select (MTS) dial with MUD & SAND, ROCK & DIRT, SNOW and NORMAL drive modes	S (AWD)	S (AWD)	S (AWD)													
Multi-Terrain Select (MTS) dial with MUD & SAND, ROCK & DIRT, SNOW and NORMAL drive modes, and Downhill Assist Control (DAC) ⁶⁶				S	S	S (AWD)										
Drive mode dial with SPORT, Eco and NORMAL modes, EV Mode ⁶⁰ and TRAIL mode							S	S	S	S	S	S	S			
Drive mode dial with SPORT, Eco and NORMAL modes, TRAIL mode, Auto EV/HV mode, and HV/EV Charge Hold														S	S	
BODY CONSTRUCTION																
Reinforced unitized steel body	S	S	S	S	S	S	S	S	S	S	S	S	S	S	S	S
SUSPENSION																
Independent MacPherson strut front suspension with stabilizer bar; multi-link rear suspension with stabilizer bar	S	S	S	S		S	S	S	S	S				S	S	S
TRD-tuned independent MacPherson strut front suspension with stabilizer bar; multi-link rear suspension with stabilizer bar; unique shocks, struts, red-painted shock absorber, jounce bumpers					S											
Sport-tuned independent MacPherson strut front suspension with stabilizer bar; sport-tuned multi-link rear suspension with stabilizer bar											S	S				
STEERING																
Electric Power Steering (EPS); power-assisted rack-and-pinion	S	S	S	S	S	S	S	S	S	S	S	S	S	S	S	S
Steering ratio	14.3:1	14.3:1	14.4:1	14.4:1	14.4:1	14.4:1	14.3:1	14.3:1	14.3:1	14.3:1	14.3:1	14.3:1	14.3:1	14.3:1	14.3:1	14.4:1
Steering wheel turns (lock-to-lock)	2.76	2.76	2.65	2.65	2.65	2.65	2.76	2.76	2.76	2.76	2.76	2.76	2.76	2.76	2.76	2.65
Turning circle diameter, curb-to-curb (ft.)	36.1	36.1	37.4	37.4	37.4	37.4	36.1	36.1	36.1	36.1	36.1	36.1	36.1	36.1	36.1	37.4
BRAKES																
Active Cornering Assist (ACA)	S	S	S	S	S	S	S	S	S	S	S	S	S	S	S	S
Power-assisted ventilated 12.0-in. front disc brakes; ventilated 11.1-in. rear disc brakes	S	S	S	S	S	S	S	S	S	S	S	S	S			
Power-assisted ventilated 12.9-in. front disc brakes; ventilated 12.4-in. rear disc brakes																S
Electronically Controlled Braking (ECB) system with integrated regenerative braking							S	S	S	S	S	S	S	S	S	S
RATIOS																
1st gear	5.250	5.250	5.250	5.250	5.250	5.250										
2nd gear	3.028	3.028	3.028	3.028	3.028	3.028										
3rd gear	1.95	1.95	1.95	1.95	1.95	1.95										
4th gear	1.456	1.456	1.456	1.456	1.456	1.456										
5th gear	1.220	1.220	1.220	1.220	1.220	1.220										
6th gear	1.000	1.000	1.000	1.000	1.000	1.000										
7th gear	0.808	0.808	0.808	0.808	0.808	0.808										
8th gear	0.673	0.673	0.673	0.673	0.673	0.673										
Reverse	4.014	4.014	4.014	4.014	4.014	4.014										
Axle ratio	3.177	3.177	3.177	3.177	3.177	3.177	3.605	3.605	3.605	3.605	3.605	3.605	3.605	3.605	3.605	3.605
Final drive gear ratio	2.235	2.235	2.235	2.235	2.235	2.235	10.781	10.781	10.781	10.781	10.781	10.781	10.781	10.781	10.781	10.781
TOW PREP EQUIPMENT⁴⁴																
Automatic transmission fluid cooler	S	S	S			S										
Tow hitch receiver and wiring harness	O	O	O	O	O	O	O	O	O	O	O	O	O	O	O	O

RAV4 SPECIFICATIONS

S = Standard O = Optional P = Available as part of a package

Dimensions

	LE	XLE	XLE Premium	Adventure	TRD Off-Road	Limited	Hybrid LE	Hybrid XLE	Hybrid Woodland Edition	Hybrid XLE Premium	Hybrid SE	Hybrid XSE	Hybrid Limited	Prime SE	Prime XSE	
EXTERIOR DIMENSIONS (in.)																
Overall height with/without antenna	67.0	67.0	67.2	68.6	68.6	67.2	67.0	67.0	67.0	67.0	67.0	67.0	67.0	67.0	67.0	67.2
Overall length/width	180.9/73.0	180.9/73.0	180.9/73.0	181.5/73.4	181.5/73.4	180.9/73.0	180.9/73.0	180.9/73.0	180.9/73.0	180.9/73.0	180.9/73.0	180.9/73.0	180.9/73.0	180.9/73.0	180.9/73.0	180.9/73.0
Track (front/rear)	63.0/63.7	63.0/63.7	62.6/63.3	62.6/63.3	62.6/63.3	62.6/63.3	63.0/63.7	63.0/63.7	63.0/63.7	62.6/63.3	63.0/63.7	63.0/63.7	63.0/63.7	63.0/63.7	63.0/63.7	63.0/63.7
Wheelbase	105.9	105.9	105.9	105.9	105.9	105.9	105.9	105.9	105.9	105.9	105.9	105.9	105.9	105.9	105.9	105.9
INTERIOR DIMENSIONS, FRONT/SECOND-ROW SEATS (in.)																
Head room (front/rear) with moonroof	37.7/39.5	37.7/39.5	37.7/39.5	37.7/39.5	37.7/39.5	37.7/39.5	37.7/39.5	37.7/39.5	37.7/39.5	37.7/39.5	37.7/39.5	37.7/39.5	37.7/39.5	37.7/39.5	37.7/39.5	37.7/39.5
Hip room (front/rear)	54.3/47.7	54.3/47.7	54.3/47.7	54.3/47.7	54.3/47.7	54.3/47.7	54.3/47.7	54.3/47.7	54.3/47.7	54.3/47.7	54.3/47.7	54.3/47.7	54.3/47.7	54.3/47.7	54.3/47.7	54.3/47.7
Leg room (front/rear)	41.0/37.8	41.0/37.8	41.0/37.8	41.0/37.8	41.0/37.8	41.0/37.8	41.0/37.8	41.0/37.8	41.0/37.8	41.0/37.8	41.0/37.8	41.0/37.8	41.0/37.8	41.0/37.8	41.0/37.8	41.0/37.8
Shoulder room (front/rear)	57.8/56.4	57.8/56.4	57.8/56.4	57.8/56.4	57.8/56.4	57.8/56.4	57.8/56.4	57.8/56.4	57.8/56.4	57.8/56.4	57.8/56.4	57.8/56.4	57.8/56.4	57.8/56.4	57.8/56.4	57.8/56.4
Cargo length behind rear seat ⁵¹	40.0	40.0	40.0	40.0	40.0	40.0	40.0	40.0	40.0	40.0	40.0	40.0	40.0	40.0	40.0	40.0
Cargo minimum/maximum width ⁵¹	39.4/59.0	39.4/59.0	39.4/59.0	39.4/59.0	39.4/59.0	39.4/59.0	39.4/59.0	39.4/59.0	39.4/59.0	39.4/59.0	39.4/59.0	39.4/59.0	39.4/59.0	39.4/59.0	39.4/59.0	39.4/59.0
Cargo minimum/maximum height ⁵¹	34.5/36.6	34.5/36.6	34.5/36.6	34.5/36.6	34.5/36.6	34.5/36.6	34.5/36.6	34.5/36.6	34.5/36.6	34.5/36.6	34.5/36.6	34.5/36.6	34.5/36.6	34.5/36.6	34.5/36.6	33.2
INTERIOR DIMENSIONS (cu. ft.)																
EPA interior volume (estimated)	136.4	136.4	136.4	136.4	136.4	136.4	136.4	136.4	136.4	136.4	136.4	136.4	136.4	136.4	136.4	136.4
EPA passenger volume (estimated)	98.9	98.9	98.9	98.9	98.9	98.9	98.9	98.9	98.9	98.9	98.9	98.9	98.9	98.9	98.9	98.9
Cargo volume behind front/rear seat ⁵¹	69.8/37.6	69.8/37.5	69.8/37.5	69.8/37.6	69.8/37.6	69.8/37.5	69.8/37.6	69.8/37.5	69.8/37.6	69.8/37.5	69.8/37.5	69.8/37.5	69.8/37.5	69.8/37.5	69.8/33.5	69.8/33.5

Weights/Capacities

WEIGHT/CAPACITY

Curb weight (lb.)	3380	3450 (FWD)	3450	3680	3680	3510 (FWD)	3710	3775	3775	3755	3780 (FWD)	3805	3805	4235	4300	
Fuel tank (gal.)	14.5	14.5	14.5	14.5	14.5	14.5	14.5	14.5	14.5	14.5	14.5	14.5	14.5	14.5	14.5	
Gross Vehicle Weight Rating (GVWR) (lb.)	4610	4610	4610	4705	4705	4610	4920	4920	4920	4920	4920	4920	4920	5530	5530	
Payload (lb.) ⁶⁹	1230 (FWD)	1160 (FWD)	1160	1025	1025	1100	1210	1145	1145	1145	1140	1115	1115	1295	1230	
Seating capacity	5	5	5	5	5	5	5	5	5	5	5	5	5	5	5	
TOWING																
Towing capacity (lb.) ⁴⁴	1500	1500	1500	3500	3500	1500	1750	1750	1750	1750	1750	1750	1750	1750	2500	2500

Tires

TYPE

All-season mud and snow-rated radials	S	S	S	S		S	S	S		S	S	S	S	S	S	S
Falken ⁴⁷ All-Terrain tires					S				S							
Spare — Temporary	S	S	S	S	S	S	S	S		S	S	S	S	S	S	S

MPG

MPG/MPGe

Mileage estimate: MPG ^{3,4}	27/34/30 (FWD)	28/35/30 (FWD)	28/35/30 (FWD)			27/35/30 (FWD)										
(city/highway/combined)	27/34/30 (AWD)	27/33/29 (AWD)	27/33/29 (AWD)	25/33/28	25/32/28	25/33/28 (AWD)	41/38/40	41/38/40	38/35/37	41/38/40	38/41/40	41/38/40	41/38/40	40/36/38	40/36/38	
MPGe ⁴															94	94
Electric driving range (miles) ⁵															42	42

DISCLOSURES

1. Dynamic Navigation depends on factors outside of Toyota's control, including an operative telematics device, a cellular connection, GPS signal, and the availability of a compatible wireless network, without which system functionality and availability may be limited or precluded. Services not available in every city or roadway. Use common sense when relying on information provided. Service may vary by vehicle and region. Registration is required. Subscription required after trial. Terms of Use apply. Data charges may apply. See *Owner's Manual* and <https://www.toyota.com/connected-services> for additional limitations and details. To learn about Toyota's Connected Services data collection, use, sharing and retention practices, please visit <https://www.toyota.com/privacyvts/>. The Dynamic Navigation trial period is at no extra cost and begins on the original date of purchase or lease of a new vehicle. Paid subscription required after trial to access the service. 2. JBL® is a registered trademark of Harman International Industries, Inc. 3. EPA-estimated 27 city/35 highway/30 combined mpg rating for 2023 RAV4 LE FWD, XLE FWD, XLE Premium FWD and Limited FWD; EPA-estimated 27 city/34 highway/30 combined mpg rating for 2023 RAV4 LE AWD; EPA-estimated 27 city/33 highway/29 combined mpg rating for 2023 RAV4 XLE AWD and XLE Premium AWD; EPA-estimated 25 city/33 highway/28 combined mpg rating for 2023 RAV4 Adventure and Limited AWD; EPA-estimated 25 city/32 highway/28 combined mpg rating for 2023 RAV4 TRD Off-Road. EPA-estimated 41 city/38 highway/40 combined mpg rating for 2023 RAV4 Hybrid LE, Hybrid XLE, Hybrid XLE Premium, Hybrid SE, Hybrid XSE and Hybrid Limited; EPA-estimated 38 city/35 highway/37 combined mpg rating for 2023 RAV4 Hybrid Woodland Edition. Use for comparison purposes only. Your mileage will vary for many reasons, including your vehicle's condition and how/where you drive. See www.fueleconomy.gov. 4. EPA-estimated 94 combined MPGe rating for 2023 RAV4 Prime. MPGe is the EPA-equivalent of gasoline fuel efficiency for electric operation. EPA-estimated 38 combined gas-only mpg. Use for comparison purposes only. Your MPGe/MPG will vary for many reasons, including your vehicle's condition and how/where you drive. See www.fueleconomy.gov. 5. EPA-estimated 42-mile all-electric driving range when fully charged for 2023 RAV4 Prime. Use for comparison purposes only. Your mileage will vary for many reasons, including your vehicle's condition and how/where you drive. See www.fueleconomy.gov. 6. Performance figures are for comparison only and were obtained with prototype vehicles by professional drivers using special safety equipment and procedures. Do not attempt. 7. Apps and services are subject to change at any time without notice. Data charges may apply. Apple CarPlay® functionality requires a compatible iPhone® connected wirelessly to the vehicle. Apple CarPlay® is a registered trademark of Apple Inc. 8. iPhone® is a registered trademark of Apple Inc. All rights reserved. 9. Android is a trademark of Google LLC. 10. Android™ and Android Auto™ are trademarks of Google LLC. To wirelessly use Android Auto™ on your car display, you need a compatible Android™ smartphone with an active data plan. You can check which smartphones are compatible at g.co/androidauto/requirements. 11. Trial length and service availability may vary by model, model year or trim. Service will automatically stop at the end of your trial subscription period unless you decide to continue service. If you do not wish to enjoy your trial, you can cancel by calling the number below. All SiriusXM services require a subscription, each sold separately by SiriusXM after the trial period. **Service subject to the SiriusXM Customer Agreement and Privacy Policy; visit www.siriusxm.com to see complete terms and how to cancel which includes calling 1-866-635-2349.** Some services and features are subject to device capabilities and location availability. All fees, content and features are subject to change. SiriusXM, Pandora and all related logos are trademarks of Sirius XM Radio Inc. and its respective subsidiaries. 12. Connected Services depend on factors outside Toyota's control, including an operative telematics device, a cellular connection, GPS signal and the availability of a compatible wireless network, without which system functionality and availability may be limited or precluded, including access to response center and emergency support. Service may vary by vehicle and region. Apps and services subject to change at any time without notice. Requires app download/registration and subscription after trial (if applicable). Terms of Use apply. Data usage and charges may apply. See usage precautions and service limitations in *Owner's Manual* and <https://www.toyota.com/connected-services/> for additional limitations and details. To learn about Toyota's Connected Services data collection, use, sharing and retention practices, please visit <https://www.toyota.com/privacyvts/>. All trials begin on the original date of purchase or lease of a new vehicle, with the exception of Wi-Fi for which the trial begins at the time of activation. Paid subscription required after trial in order to continue accessing the respective services. Terms of Use apply. 13. Safety Connect® depends on factors outside of Toyota's control, including an operative telematics device, a cellular connection, GPS signal, and the availability of a compatible wireless network, without which system functionality and availability may be limited or precluded, including access to response center and emergency support. Stolen vehicle police report required to use Stolen Vehicle Locator. Automatic Collision Notification activates only in limited circumstances. Requires app download/registration and subscription after trial (if applicable). Service subject to change at any time without notice. Terms of Use apply. Service may vary by vehicle and region. See usage precautions and service limitations in *Owner's Manual* and at toyota.com/connected-services for additional details. To learn about Toyota's Connected Services data collection, use, sharing and retention practices, please visit <https://www.toyota.com/privacyvts/>. The Safety Connect® trial period (if applicable) is at no extra cost and begins on the original date of purchase or lease of a new vehicle. Subscription required after trial to access the service. 14. Requires adequate cellular coverage and GPS signal strength. May not work in all areas. Service may vary by vehicle and region. See Toyota Dealer for details and exclusions. 15. Building and/or parking structures may limit system effectiveness. Stolen vehicle police report required to use Stolen Vehicle Locator. For additional assistance contact the Toyota Customer Experience Center at 1-800-331-4331. 16. Information provided is based on the last time data was collected from the vehicle and is not real-time data. Service Connect depends on factors outside of Toyota's control, including an operative telematics device, a cellular connection, GPS signal, and the availability of a compatible wireless network, without which system functionality and availability may be limited or precluded. Service may vary by vehicle and region. Requires app download/registration and subscription after trial. Service subject to change at any time without notice. Terms of Use apply. Data charges may apply. See usage precautions and service limitations in *Owner's Manual* and at toyota.com/connected-services for additional details. To learn about Toyota's Connected Services data collection, use, sharing and retention practices, please visit <https://www.toyota.com/privacyvts/>. Service Connect is not renewable as a stand-alone service and requires a subscription to any of Safety Connect®, Remote Connect or Drive Connect upon trial expiration. The Service Connect trial period is at no extra cost and begins on the original date of purchase or lease of a new vehicle. Service Connect is not renewable as a stand-alone service and requires a subscription to any of Safety Connect®, Remote Connect or Drive Connect upon trial expiration. 17. Eligible vehicle and wireless service required. Wi-Fi Connect depends on factors outside of Toyota's control, including an operative telematics device, a cellular connection, GPS signal, and the availability of a compatible wireless network, without which system functionality and availability may be limited or precluded. Wi-Fi Connect coverage and service not available everywhere. Valid in the contiguous U.S. and Alaska. Do not drive distracted. Go to att.com/toyota for terms and conditions. Data usage and charges apply. Up to 5 devices can be supported using in-vehicle connectivity. Apps and services subject to change at any time without notice. The Wi-Fi Connect trial begins at the time of enrollment and expires the earlier of 3GB data use or the 1-month trial period ends. Subscription required after trial. Integrated Streaming requires separate subscriptions to third-party provider services. Terms of Use apply. 18. Apple Music and the Apple logo are trademarks of Apple Inc., registered in the U.S. and other countries. Requires Wi-Fi Connect subscription after trial (if applicable) and your own Apple Music account. 19. Amazon Music, and all related marks are trademarks of Amazon Technologies, Inc. or its affiliates. 20. Drive Connect availability and accuracy depend on factors outside of Toyota's control, including an operative telematics device, a cellular connection, GPS signal, and the availability of a compatible wireless network, without which system functionality and availability may be limited or precluded. Services not available in every city or roadway. Services subject to change at any time without notice. Requires app download/registration and subscription required after trial (if applicable). Terms of Use apply. See *Owner's Manual* and <https://www.toyota.com/connected-services/> for additional limitations and details. To learn about Toyota's Connected Services data collection, use, sharing and retention practices, please visit <https://www.toyota.com/privacyvts/>. 21. Destination Assist depends on factors outside of Toyota's control, including an operative telematics device, a cellular connection, GPS signal, and the availability of a compatible wireless network, without which system functionality and availability may be limited or precluded. Use common sense when relying on this information. Service may vary by vehicle and region. Registration required. Subscription required after trial. Services subject to change at any time without notice. Terms of Use apply. Data charges may apply. See *Owner's Manual* and toyota.com/connected-services for additional limitations and details. To learn about Toyota's Connected Services data collection, use, sharing and retention practices, please visit <https://www.toyota.com/privacyvts/>. The Destination Assist trial period is at no extra cost and begins on the original date of purchase or lease of a new vehicle. Paid subscription required after trial to access the service. 22. Use only if aware of circumstances surrounding vehicle and it is legal and safe to do so (e.g., do not remotely start engine if vehicle is in an enclosed space or vehicle is occupied by a child). Remote Connect depends on factors outside of Toyota's control, including an operative telematics device, a cellular connection, GPS signal, and the availability of a compatible wireless network, without which system functionality and availability may be limited or precluded. Digital Key also requires Bluetooth® connectivity. Service may vary by vehicle and region. Requires app download and registration/subscription after trial (if applicable). Terms of Use apply. Data charges may apply. Remote start/stop not available on manual transmission-equipped vehicles. Services subject to change at any time without notice. See usage precautions and service limitations in *Toyota Owner's Manual* and at <https://www.toyota.com/connected-services/> for additional details. To learn about Toyota's Connected Services data collection, use, sharing and retention practices, please visit <https://www.toyota.com/privacyvts/>. The Remote Connect trial period (if applicable) is at no extra cost and begins on the original date of purchase or lease of a new vehicle. Subscription required after trial to access the service. Terms of Use apply. 23. Digital Key function requires active Remote Connect trial or subscription. Depends on operative telematics device, availability of compatible wireless network and other factors. Use only if aware of vehicle surroundings and it is legal and safe (ex., do not use if vehicle is in enclosed space or is occupied by a child). Subject to change without notice. Requires app download and registration/subscription after trial (if applicable). Not available on vehicles with manual transmission. Terms of Use apply. Data charges may apply. See *Toyota Owner's Manual* and <https://www.toyota.com/connected-services/>. To learn about Toyota's Connected Services data collection, use, sharing and retention practices, please visit <https://www.toyota.com/privacyvts/>. 24. Not all smartwatches are compatible with Remote Connect: Samsung Gear, Fitbit, Garmin are not compatible. 25. Amazon, Alexa and all related marks are trademarks of Amazon.com, Inc. or its affiliates. Certain functions require adequate signal strength and/or smartphone technology/connectivity. Not all Amazon Alexa functionality is available for in-vehicle use. See applicable app for details. Download of the Toyota app and Toyota+Alexa app are both required to begin in-vehicle use of Alexa. Data charges may apply for certain functions. Apps and services subject to change at any time without notice. To learn more, go to <https://www.toyota.com/audio-multimedia>. To learn more about Toyota's data collection, use, sharing and retention practices, please visit <https://www.toyota.com/privacyvts/>. 26. Google is a trademark of Google LLC. 27. Toyota Safety Sense™ effectiveness is dependent on many factors including road, weather and vehicle conditions. Drivers are responsible for their own safe driving. Always pay attention to your surroundings and drive safely. See *Owner's Manual* for additional limitations and details. 28. The Pre-Collision System (PCS) with Pedestrian Detection (PD) is designed to determine if impact is imminent and help reduce impact speed and damage in certain frontal collisions involving a vehicle, a pedestrian or a bicyclist. PCS w/PD is not a substitute for safe and attentive driving. System effectiveness depends on many factors, such as speed, size and position of pedestrian or bicyclist and weather, light and road conditions. See *Owner's Manual* for additional limitations and details. 29. Full-Speed Range Dynamic Radar Cruise Control (DRCC) is designed to assist the driver and is not a substitute for safe and attentive driving practices. System effectiveness is dependent on many factors including road, weather and traffic conditions. See *Owner's Manual* for additional limitations and details. 30. Lane Departure Alert with Steering Assist is designed to read visible lane markers under certain conditions. It provides a visual and audible alert and slight steering force when lane departure is detected. It is not a collision-avoidance system or a substitute for safe and attentive driving. Effectiveness is dependent on many factors including road, weather and vehicle conditions. See *Owner's Manual* for additional limitations and details. 31. Automatic High Beams operate

DISCLOSURES

at speeds above 25 mph. Factors such as a dirty windshield, weather, lighting and terrain limit effectiveness, requiring the driver to manually operate the high beams. See *Owner's Manual* for additional limitations and details. **32.** Lane Tracing Assist (LTA) is designed to read visible lane markers and detect other vehicles under certain conditions. It is only operational when DRCC is engaged. See *Owner's Manual* for additional limitations and details. **33.** Do not rely exclusively on Road Sign Assist (RSA). RSA is a driver support system that utilizes the vehicle's forward-facing camera and navigation system (when data is available) to recognize certain road signs and provide information to the driver via the multi-information display and/or Head-Up Display. Effectiveness is dependent on road, weather, vehicle and sign conditions. Use common sense when using RSA and do not drive distracted. See *Owner's Manual* for additional limitations and details. **34.** May not be compatible with all mobile phones, MP3/WMA players and like models. **35.** The Drive Connect trial period is at no extra cost and begins on the original date of purchase or lease of a new vehicle. Paid subscription required after trial (if applicable) to access the service. Terms of Use apply. **36.** Airbag systems are Supplemental Restraint Systems and are designed to inflate only under certain conditions and in certain types of severe collisions. To decrease the risk of injury from an inflating airbag, always wear seatbelts and sit upright in the middle of the seat as far back as possible. Do not put objects in front of an airbag or around the seatback. Do not use a rearward-facing child seat in any front passenger seat. See *Owner's Manual* for additional limitations and details. **37.** Do not rely exclusively on the Blind Spot Monitor. Always look over your shoulder and use your turn signal. There are limitations to the function, detection and range of the monitor. See *Owner's Manual* for additional limitations and details. **38.** Do not rely exclusively on the Rear Cross-Traffic Alert system. Always look over your shoulder and use your mirrors to confirm rear clearance. There are limitations to the function, detection and range of the system. See *Owner's Manual* for additional limitations and details. **39.** Installation of a tow hitch receiver or other accessories located near the rear bumper or side-door kick sensors may require disabling or removing the kick sensor, and the sensor operation setting in your vehicle should be turned off. Water, weather, dirt, and other conditions also may cause the sensor to not operate properly or to operate unintentionally. See *Owner's Manual* for limitations. **40.** SofTex® is a registered trademark of Toyota Motor Sales, U.S.A., Inc. **41.** At speeds of 9 mph or less, Front and Rear Parking Assist with Automatic Braking (PA w/AB) is designed to assist drivers in avoiding potential collisions with nearby static objects when the vehicle is in Drive or Reverse and approaching crossing vehicles when the vehicle is in Reverse. Do not overly rely on PA w/AB. Always look around outside the vehicle and use mirrors to confirm clearance. Certain vehicle and environmental factors, including an object or vehicle's shape, size and composition, may affect the system's effectiveness. See *Owner's Manual* for additional limitations and details. **42.** HomeLink® and the HomeLink® house icon are registered trademarks of Gentex Corporation. **43.** Qi wireless charging may not be compatible with all mobile phones, MP3/WMA players and like models. When using the wireless charging system, avoid placing metal objects between the wireless charger and the mobile device when charging is active. Doing so may cause metal objects to become hot and could cause burns. **44.** Before towing, confirm your vehicle and trailer are compatible, hooked up and loaded properly and that you have any necessary additional equipment. Do not exceed any Weight Ratings and follow all instructions in your *Owner's Manual*. The maximum you can tow depends on base curb weight plus the total weight of any cargo, occupants, and added vehicle equipment. "Added vehicle equipment" includes additional standard/optional equipment and accessories added by the manufacturer, dealers, and/or vehicle owners. The only way to be certain of your vehicle's exact curb weight is to weigh your vehicle without passengers or cargo. [Calculated with the new SAE J2807 method.] Installation of a tow hitch receiver or other accessories located near the rear bumper may require disabling or removing the kick sensor, and the sensor operation setting in your vehicle should be turned off. See *Owner's Manual* for limitations. **45.** Do not exceed 120V. See *Owner's Manual* for additional limitations and details. **46.** Extra-cost color. **47.** Falken is a registered trademark of Sumitomo Rubber Industries, Ltd. **48.** This floor mat/floor liner was designed specifically for use in your model and model year vehicle and SHOULD NOT be used in any other vehicle. To avoid potential interference with pedal operation, each mat/liner must be secured with its fasteners. Do not install a floor mat/floor liner on top of an existing floor mat/floor liner. **49.** The Panoramic View Monitor does not provide a comprehensive view of the area surrounding the vehicle. You should also look around outside your vehicle and use your mirrors to confirm surrounding clearance. Environmental conditions may limit effectiveness and view may become obscured. See *Owner's Manual* for additional limitations and details. **50.** EV Mode lets you operate solely on battery power at low speeds for short distances and in limited circumstances, such as in a parking garage. Different conditions may prevent or limit usage. See your *Owner's Manual* for limitations and details. **51.** Cargo and load capacity limited by weight and distribution. Always properly secure cargo and cargo area. **52.** Toyota strives to build vehicles to match customer interest and thus they typically are built with popular options and option packages. Not all options/packages are available separately and some may not be available in all regions of the country. See toyota.com for information about options/packages commonly available in your area. If you would prefer a vehicle without any or with different options, contact your dealer to check for current availability or the possibility of placing a special order. Color(s) depicted may vary based on multiple factors, including ambient lighting and the format in which it is being viewed (e.g., computer, mobile device or print). **53.** The Bluetooth® word mark and logos are registered trademarks owned by Bluetooth SIG, Inc., and any use of such marks by Toyota is under license. A compatible Bluetooth®-enabled phone must first be paired. Phone performance depends on software, coverage and carrier. **54.** When the system is on, Automatic Electric Parking Brake is designed to automatically engage the Electric Parking Brake under limited conditions. It may not hold the vehicle under all conditions and does not function when the vehicle is in Reverse. Automatic Electric Parking Brake is not a substitute for manual use of the Electric Parking Brake. See *Owner's Manual* for additional limitations and details. **55.** When the system is on, Brake Hold is designed to keep the brakes engaged after the driver brings the vehicle to a complete stop. It may not hold the vehicle under certain conditions and does not function when the vehicle is in Reverse. Brake Hold is not a substitute for safe and attentive driving. See *Owner's Manual* for additional limitations and details. **56.** Rated for 12 volts/10 amps. See *Owner's Manual* for additional limitations and details. **57.** Toyota app requires an active Remote Connect trial or subscription. **58.** Vehicle Stability Control is an electronic system designed to help the driver maintain vehicle control under adverse conditions. It is not a substitute for safe and attentive driving practices. Factors including speed, road conditions, weather and driver steering input can all affect whether VSC will be effective in preventing a loss of control. See *Owner's Manual* for additional limitations and details. **59.** Brake Assist is designed to help the driver take advantage of ABS and is not a substitute for safe driving practices. Braking effectiveness also depends on proper vehicle maintenance, tire and road conditions. See *Owner's Manual* for additional limitations and details. **60.** Smart Stop Technology® operates only in the event of certain contemporaneous brake and accelerator pedal applications. When engaged, the system will reduce power to help the brakes bring the vehicle to a stop. Factors including speed, road conditions and driver input can all impact stopping distance. Smart Stop Technology® is not a substitute for safe and attentive driving and does not guarantee instant stopping. See *Owner's Manual* for additional limitations and details. **61.** The backup camera does not provide a comprehensive view of the rear area of the vehicle and you should also look around the vehicle, using mirrors to confirm rearward clearance. Environmental conditions may limit effectiveness and view may become obscured. See *Owner's Manual* for additional limitations and details. **62.** The Tire Pressure Monitor System alerts the driver when tire pressure is critically low. For optimal tire wear and performance, tire pressure should be checked regularly with a gauge; do not rely solely on the monitor system. See *Owner's Manual* for additional limitations and details. **63.** This device is not a substitute for safe and attentive driving practices. It is the driver's responsibility to maintain a lookout for pedestrians, cyclists, other cars and objects, and to drive the vehicle in a safe and attentive manner to avoid making contact. **64.** Trailer-Sway Control (TSC) is an electronic system designed to help the driver maintain vehicle control under adverse conditions. It is not a substitute for safe driving practices. Factors including speed, road conditions, weather and driver steering input can all affect whether TSC will be effective in preventing a loss of control. See *Owner's Manual* for additional limitations and details. **65.** Hill Start Assist Control is designed to help minimize backward rolling on steep ascents. It is not a substitute for safe driving judgment and practices. Factors including speed, grade, surface conditions and driver input can all affect whether HAC will be effective in preventing a loss of control. See *Owner's Manual* for additional limitations and details. **66.** Downhill Assist Control is designed to help driver maintain vehicle control and speed on steep, downhill descents and is not a substitute for safe driving judgment and practices. Factors including speed, grade, surface conditions and driver input can affect the DAC's ability to prevent loss of control. See *Owner's Manual* for additional limitations and details. **67.** The engine immobilizer is a state-of-the-art anti-theft system that is initiated when you insert your key into the ignition switch or bring a Smart Key fob into the vehicle. The engine will only start if the code in the transponder chip inside the key/fob matches the code in the vehicle's immobilizer. The transponder chip is embedded in the key/fob and can be costly to replace. If you lose a key or fob, your Toyota dealer can help or go to www.aloa.org to find a qualified locksmith in your area who can perform high-security key service. **68.** Before towing, confirm Stop and Start Engine System is disengaged (V6 gas models only). **69.** Payload Capacity is the calculation of GVWR minus curb weight and should be used for comparison purposes only. The maximum amount of passenger and cargo weight your vehicle can carry is the Load Carrying Capacity indicated on the label(s) on the driver's doorjamb.

Toyota strives to build vehicles to match customer interest and thus they typically are built with popular options and option packages. Not all options/packages are available separately and some may not be available in all regions of the country. See toyota.com for information about options/packages commonly available in your area. If you would prefer a vehicle without any or with different options, contact your dealer to check for current availability or the possibility of placing a special order.

Color(s) depicted may vary based on multiple factors, including ambient lighting and the format in which it is being viewed (e.g., computer, mobile device or print).

Some vehicles are shown with available equipment. Seatbelts should be worn at all times. For details on vehicle specifications, standard features and available equipment in your area, contact your Toyota dealer. A vehicle with particular equipment may not be available at the dealership. Ask your Toyota dealer to help locate a specifically equipped vehicle.

All information presented herein is based on data available at the time of posting, is subject to change without notice and pertains specifically to mainland U.S.A. vehicles only. Vehicles shown may be prototypes, shown using visual effects and/or shown with options. Actual models may vary.



Mobility

For Toyota Mobility program details, go to www.toyota.com/mobility or call the Toyota Brand Engagement Center at 1-800-331-4331